

# gloCOM

## version 5.1.1

## Release notes



## New GloCOM [ 5.1.1 ]

GloCOM [ 5.1.1 ] is the modernized successor to our global communications products. GloCOM [ 5.1.1 ] offers calls with a single mouse click, instant chat, system real-time monitoring, system calls management, conference calls, and much more! GloCOM [ 5.1.1 ] is as simple as any standard messenger system (e.g. Skype) yet much more powerful!

### Features

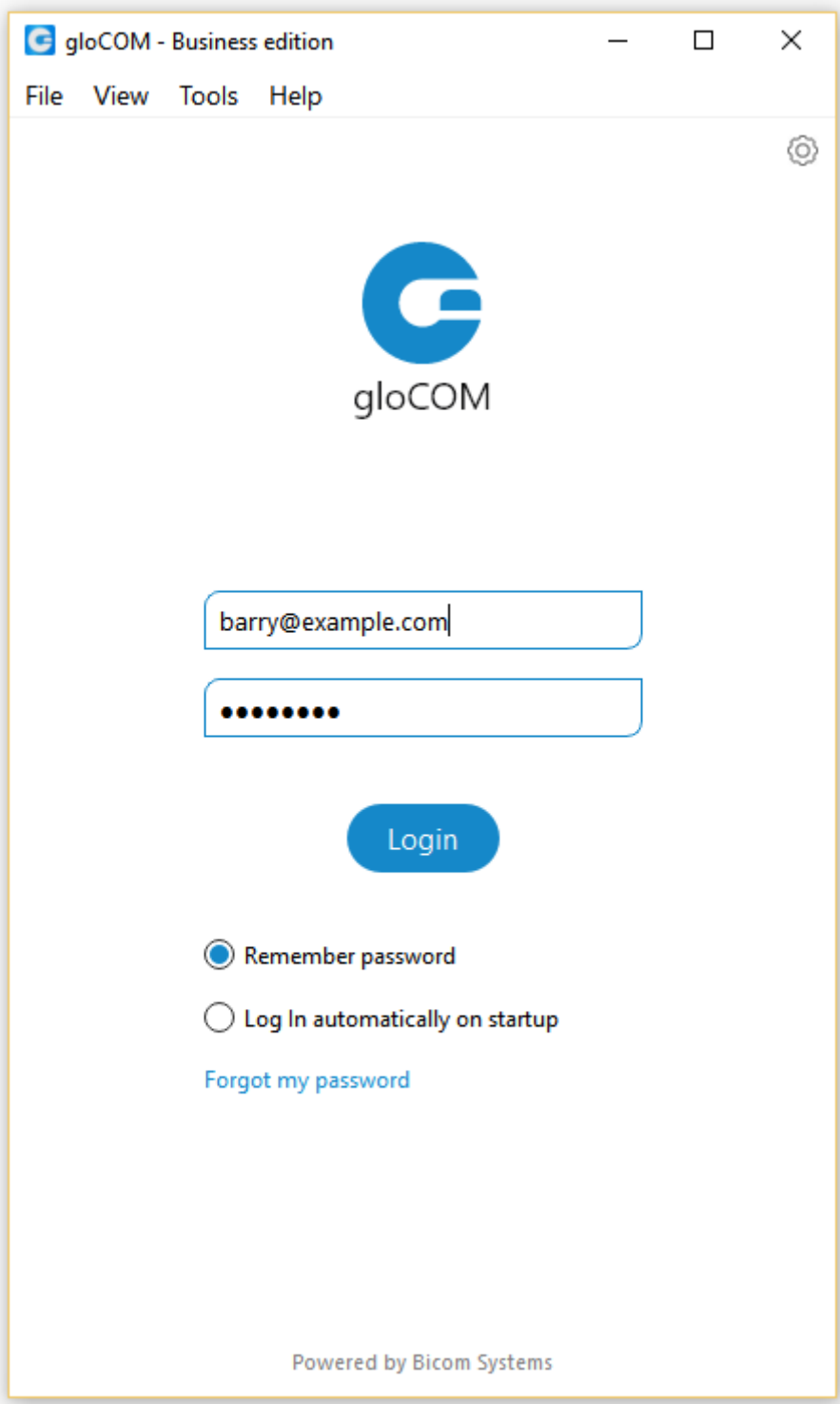
1. **Silhouette Design**
2. **CRM popup module on call finished**
3. **Call waiting option in softphone**
4. **Skype for bussines module**
5. **Submit Feedback option**
6. **Other fixes and improvements**

# New Silhouette Design

After months of hard work, we are happy to officially announce the launch of *GloCOM [ 5.1.1 ]*

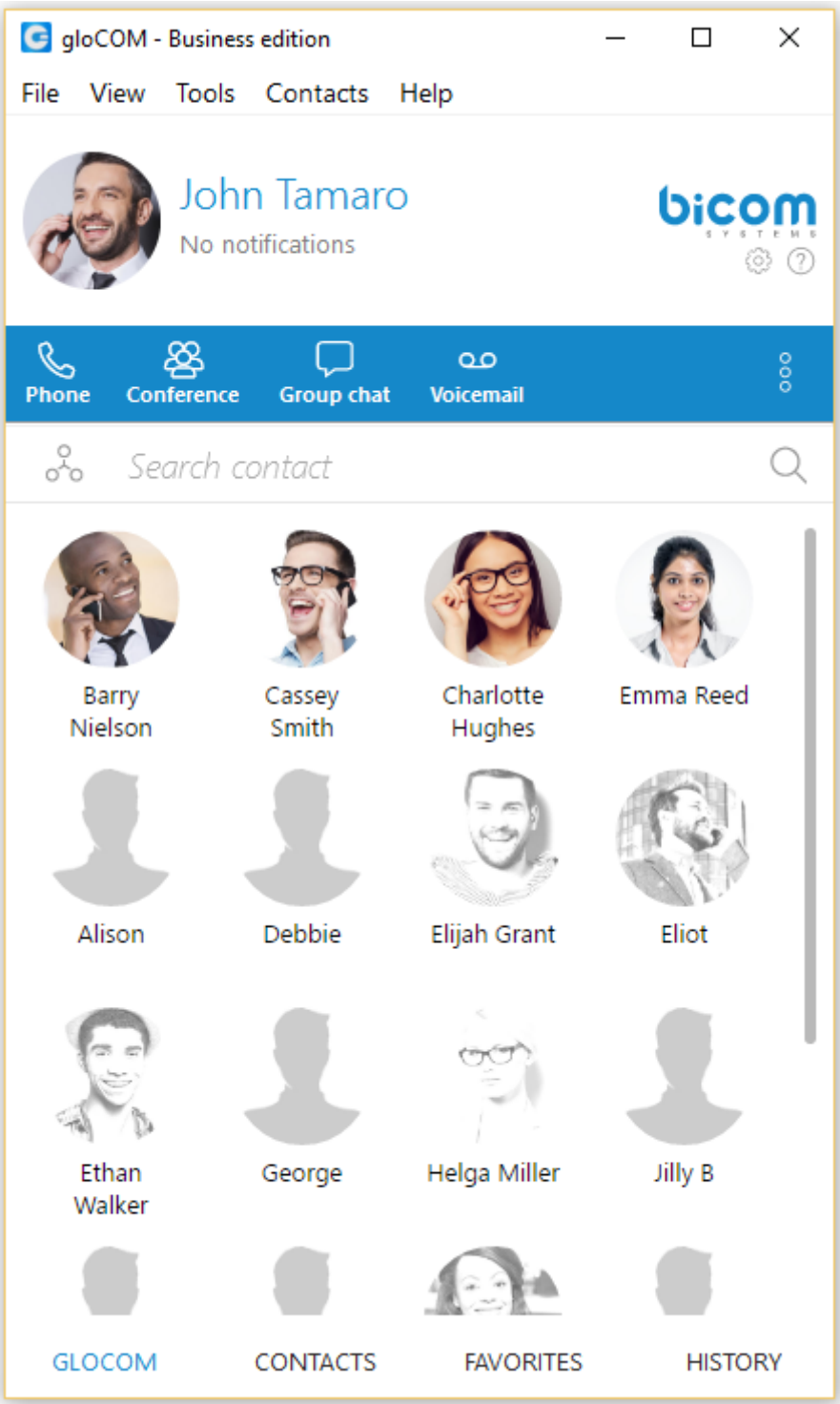
GloCOM [ 5.1.1 ] has been completely redesigned to provide our users with an easier way to reach their business goals. We hope you will enjoy the fresh and modern design.

## Login window



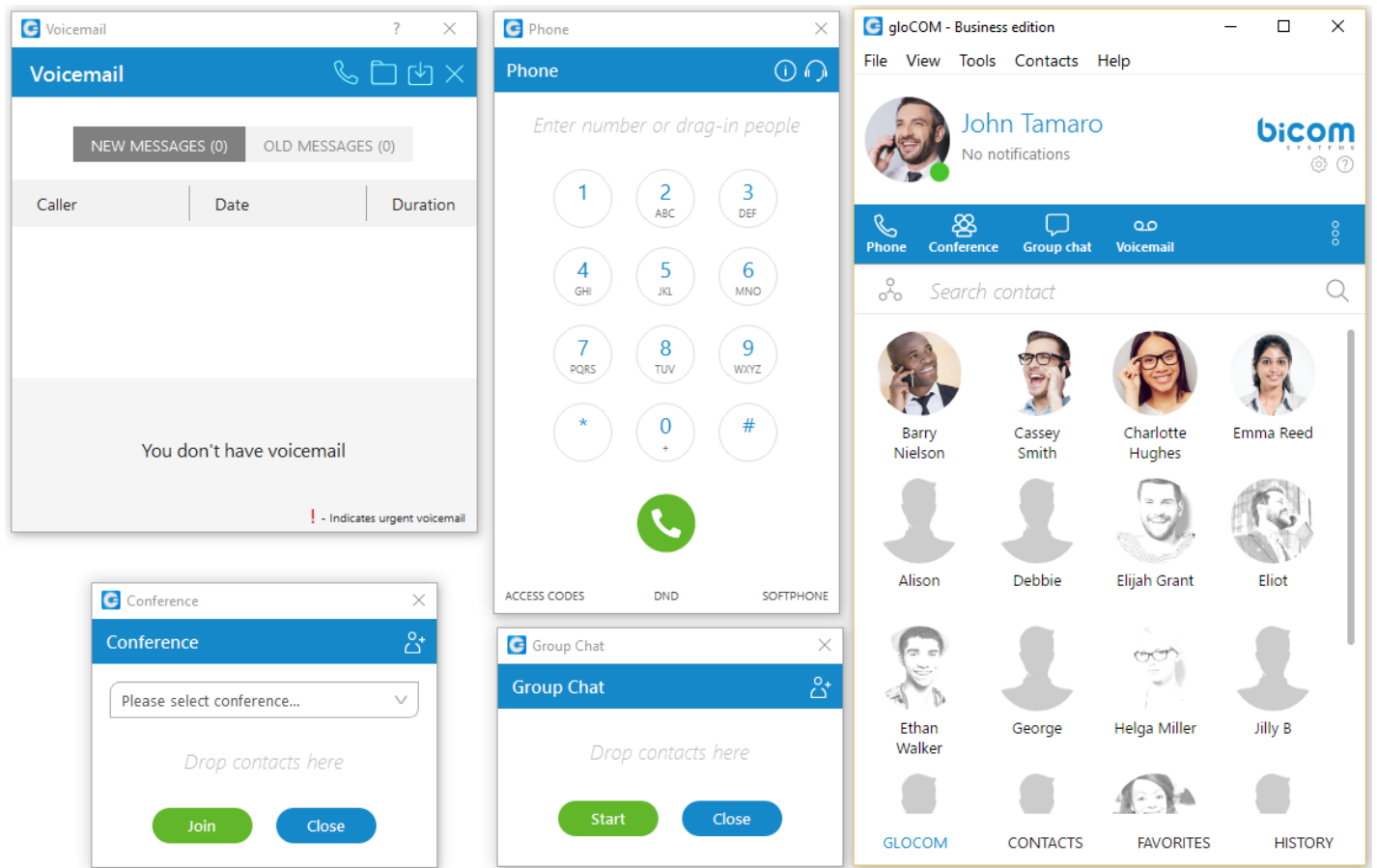
GloCOM [ 5.1.1 ] silhouette login window

# Main window



GloCOM [ 5.1.1 ] silhouette main window

## Dialogues preview



We can see all quick menu dialogues open in the image above.

- Phone
- Conference
- Group chat
- Voicemail

# Fax Dialogue

Send fax - gloCOM

PDF file \*

Learn how to send any types of documents (Word, Excel etc...)

FAX INFO

TO

Name \*

Search

Fax \*

Phone

Email

Company

FROM

Name \*

John Tamaro

Fax

Phone

Email

john@bicomsystems.com

Company

Example Company

COMMENTS AND STATUS

Message

Enter optional comments here

Resolution

Standard Resolution (204x98)

☒ Send cover page

☐ Urgent

☐ For Review

☐ Please Comment

☐ Please Reply

☐ Please Recycle

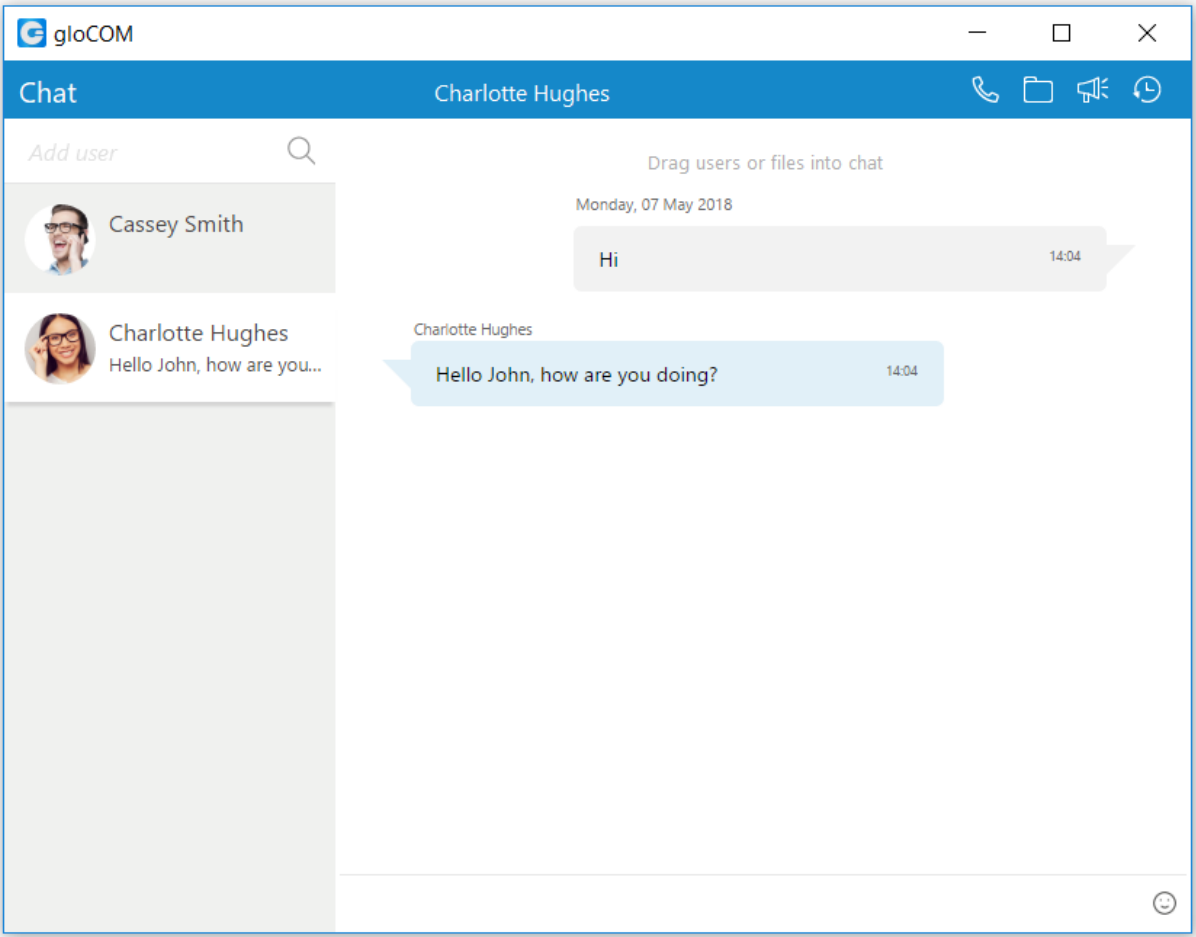
Logs

Send Fax

Close

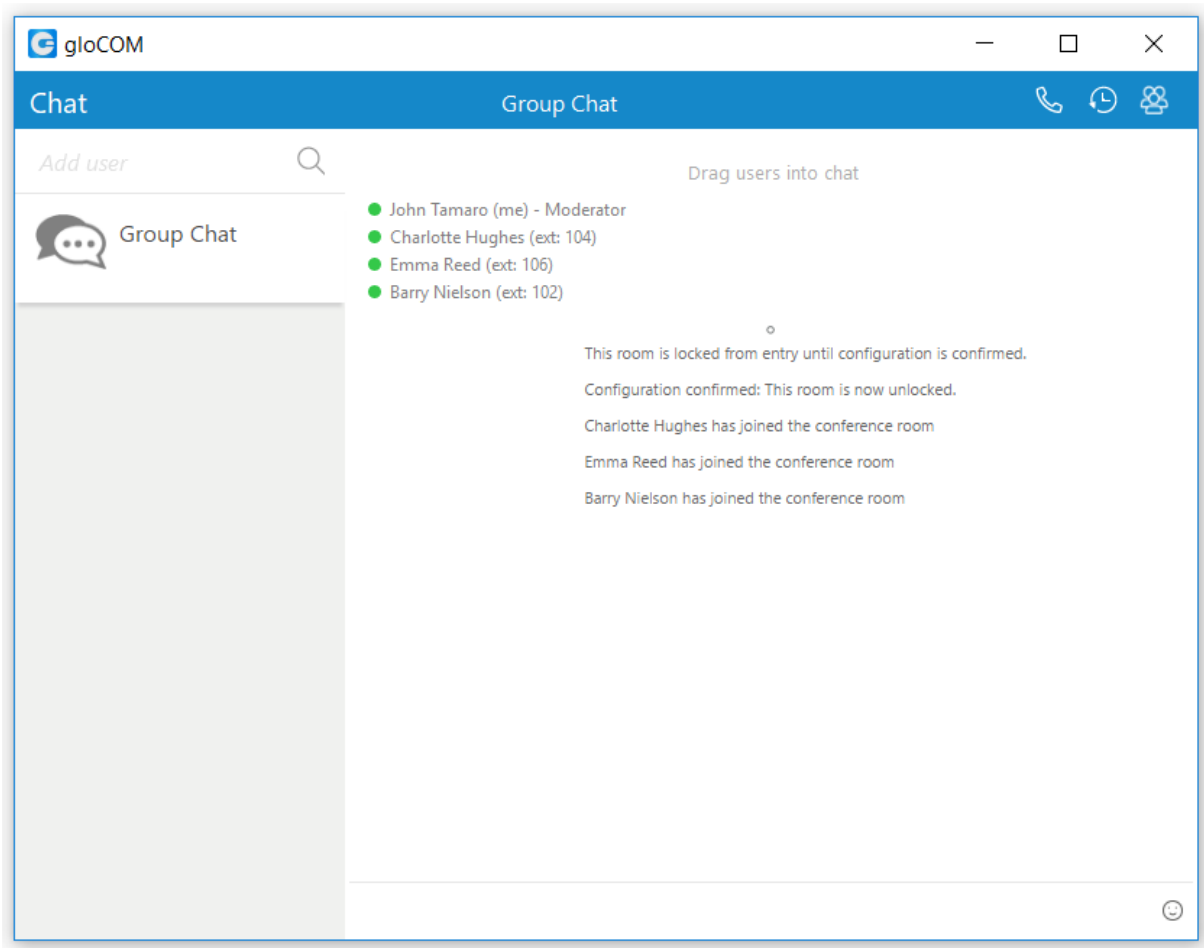
GloCOM [ 5.1.1 ] silhouette fax dialogue

# Chat Dialogue



GloCOM [ 5.1.1 ] silhouette chat

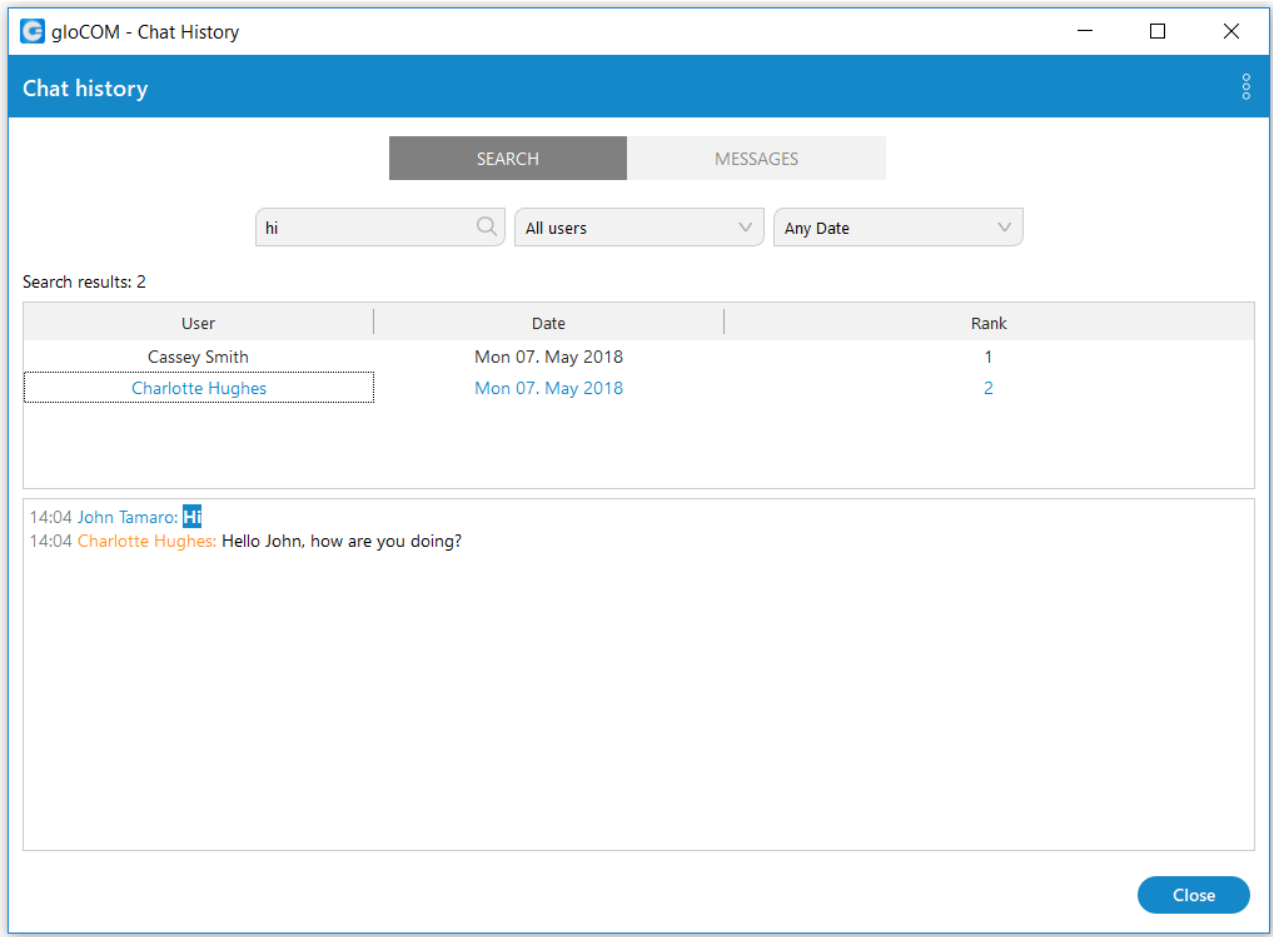
# Group Chat Dialogue



GloCOM [ 5.1.1 ] silhouette group chat

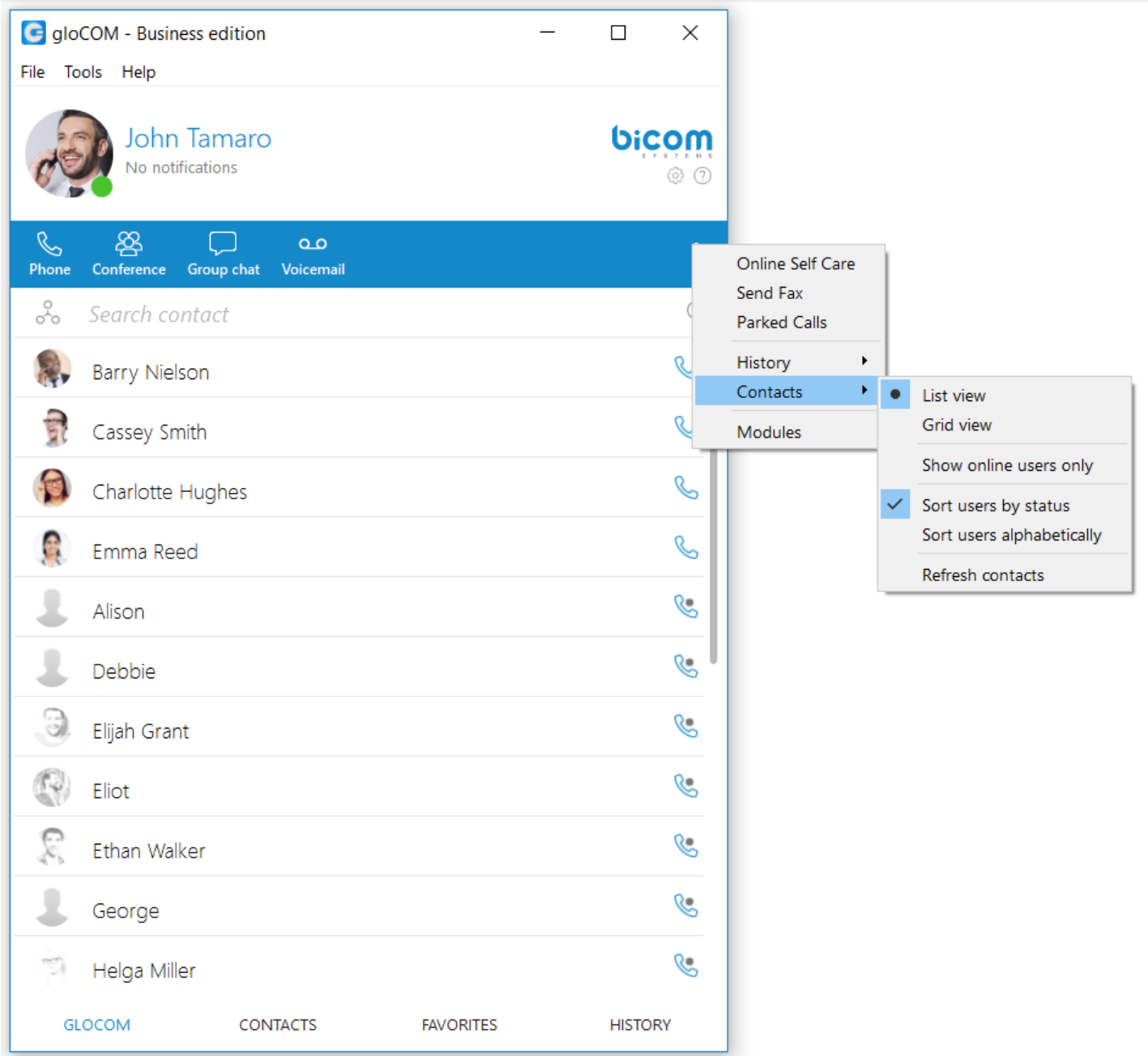


# Chat Search Dialogue



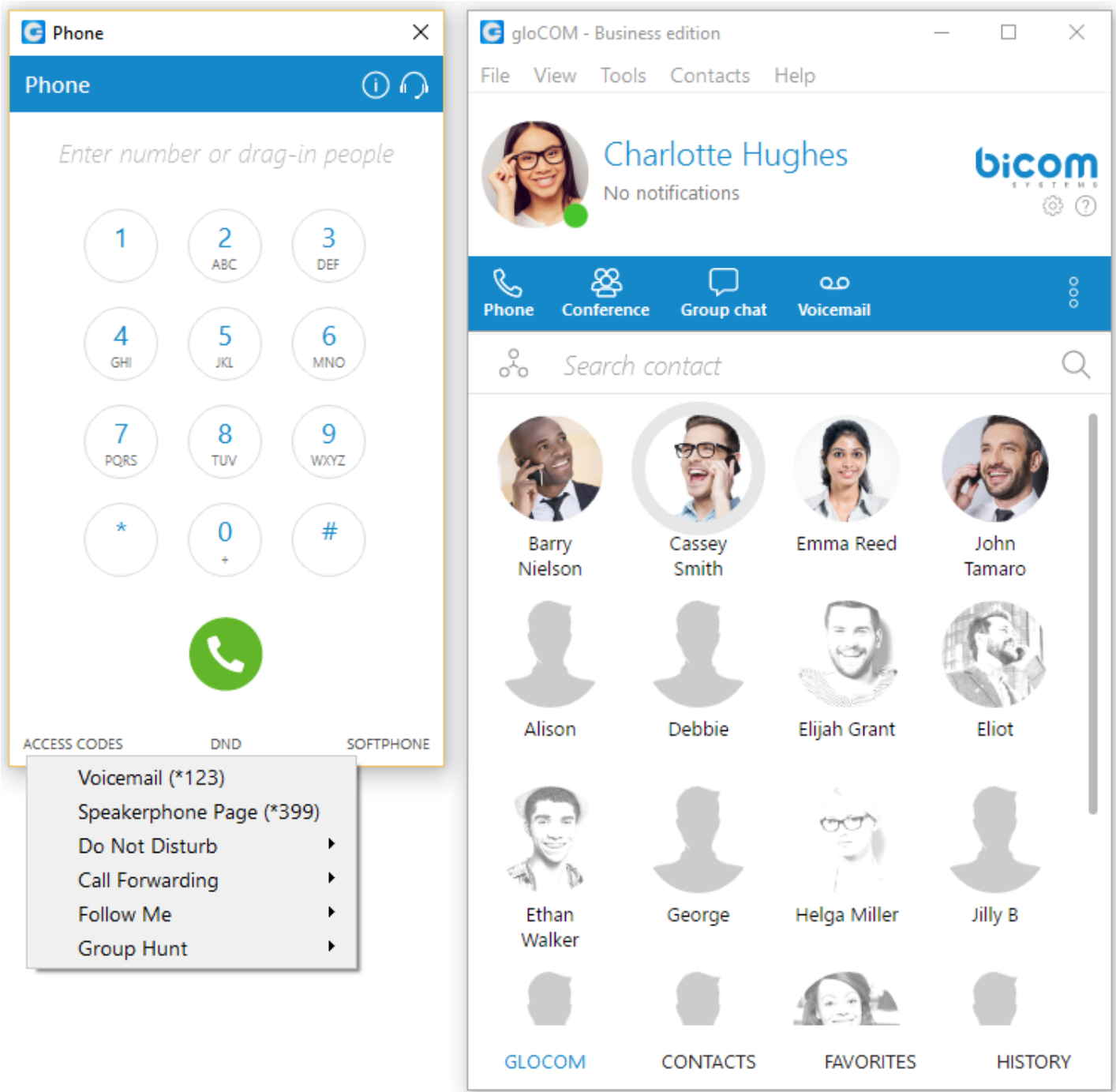
GloCOM [ 5.1.1 ] silhouette group chat search

# Right side quick menu popup



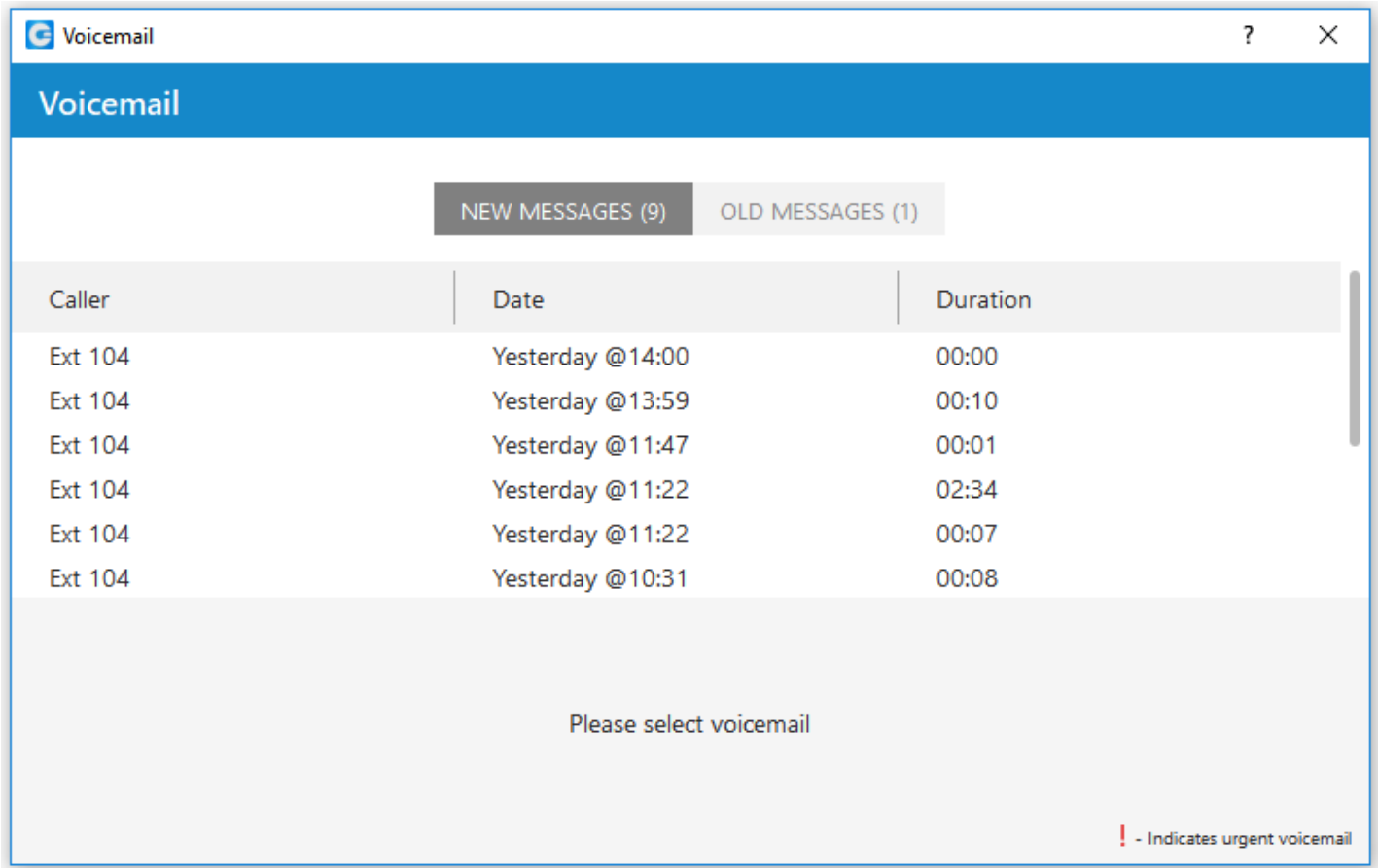
GloCOM [ 5.1.1 ] silhouette quick contacts menu

# Dialpad quick menu pop-up



GloCOM [ 5.1.1 ] silhouette access codes popup

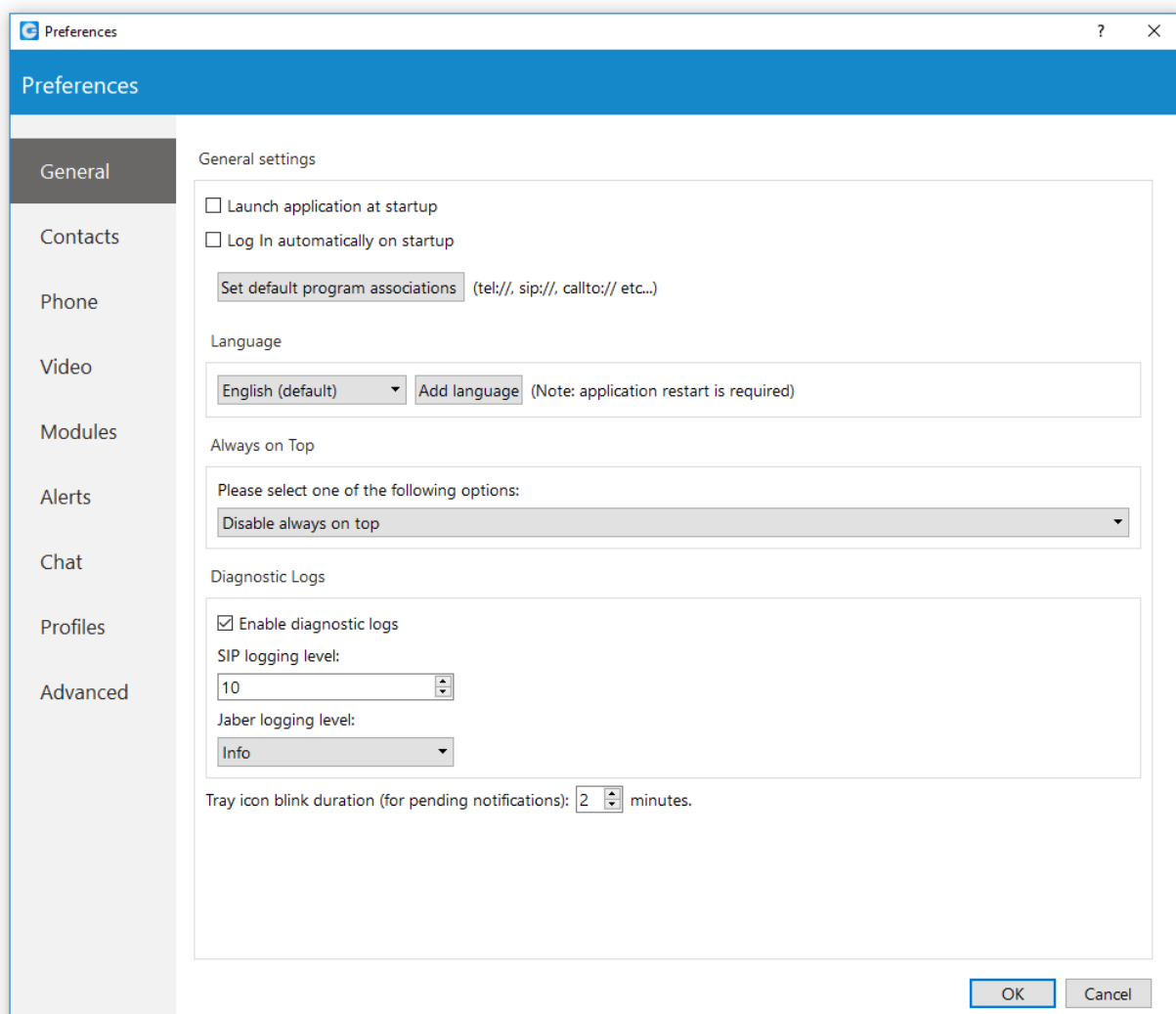
# Voicemail window



GloCOM [ 5.1.1 ] silhouette voicemail popup

# Preferences

## General settings



To start click on the *Settings* icon inside toolbar. Inside the *General Settings* section, checking the box next to “Launch application at startup” will start the application when your operating system starts, while checking the “Log in automatically on startup” will log the user in automatically every time the application is launched. Depending on your Operating System, the “Set default program associations” button will allow you to choose which protocols application will open by default (tel://, sip://, callto://, etc.).

From the drop-down menu you can select the language and if you have your own language file you can add it by clicking the *Add language* button, then select the language that you wish to add from a list and then choose your language file. You will need to restart the application for language change to take effect.

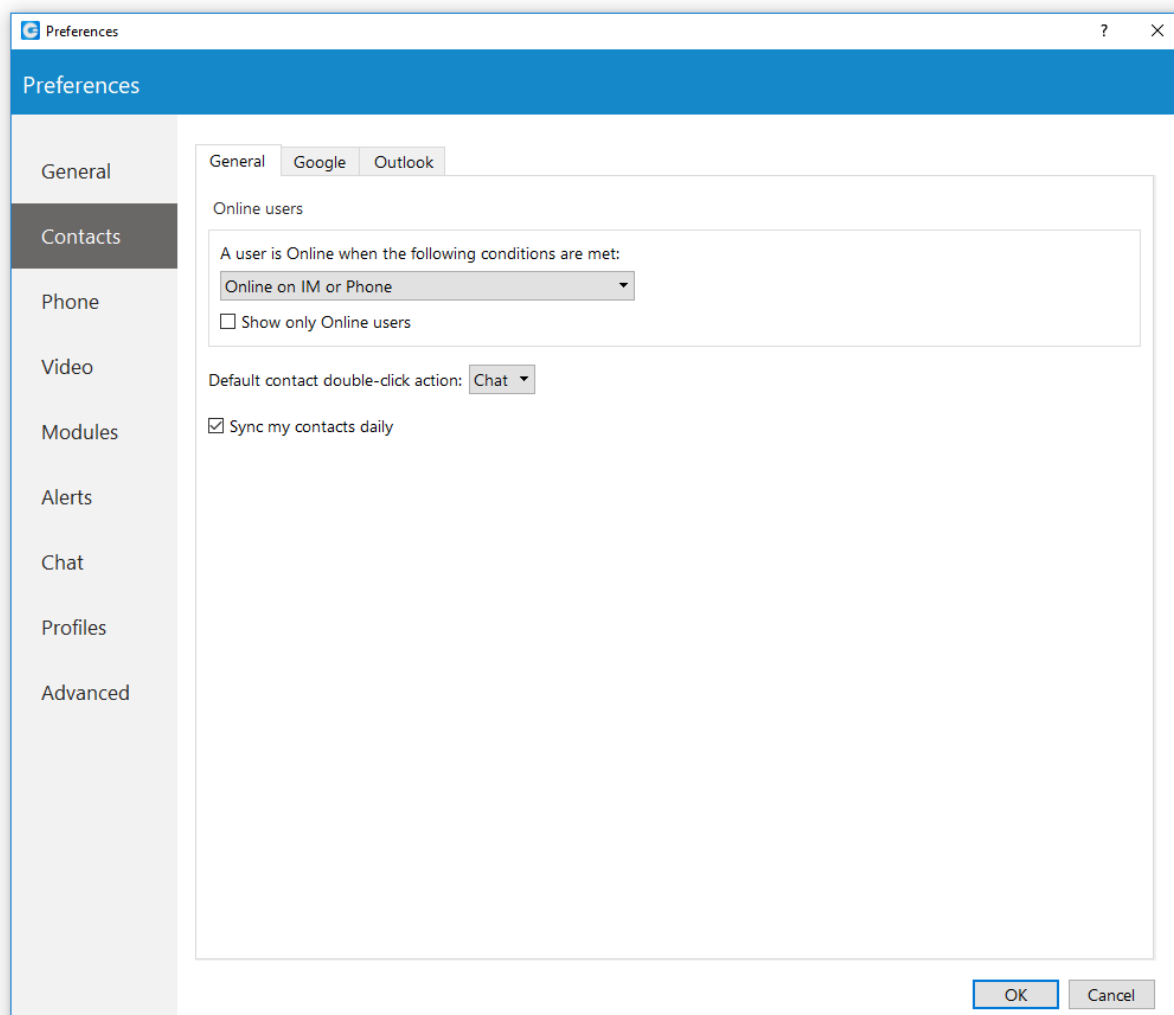
Under the *Always on Top* section you can choose whether you would like to have call or call and contacts window always on top or if you wish to disable the always on top option. This feature will keep the GloCOM [ 5.1.1 ] window on top even if another window, e.g., web browser window is selected.

You can turn on or off diagnostic logs by checking the box next to it. When turned on, GloCOM [ 5.1.1 ] will store all logs on your computer/machine. You can specify how much data/information you want to store by editing SIP and Jabber logging levels. By default the SIP level is set at 3. Depending on the situation you can choose between 1 to 10 levels where Level 1 would store the least amount of information and Level 10 would store all information. There are 4 logging levels for Jabber. Error is the first level and will store only errors, each next level includes all previous levels.

e.g., Warning will include warnings and errors, Info will include info, warnings, and errors,... and debug will include all of them.

Below the *Jabber* settings, you can set for how long the GloCOM [ 5.1.1 ] tray icon will blink while you have notifications pending such as missed calls or unread messages.

## Contacts Settings



To start click on the *Settings* icon inside toolbar, and navigate to the *Contacts* settings section. At the top you have 3 tabs: General, Google, and Outlook.

Under the Online users section you can enable or disable the option to display only online users, as well as set conditions when a user is considered to be online, e.g., if online on IM and Phone is set, the user will be considered online if he or she is available for both chat and phone calls. Next option, if Online on IM or Phone options is selected, user will be considered online if user is available for either chat or phone calls. Online on IM will consider the user to be online if the user is available for chat - and Online on phone will consider the user to be online if the user is available for phone calls. Under the “Default contact double-click action” you can set what action will be initiated when the user double-clicks on a contact. If chat is selected then a chat window with contacts will open, and if call is selected then double clicking the contact will call the contact. If you wish to sync your contacts daily, check the box next to “Sync my contacts daily”.

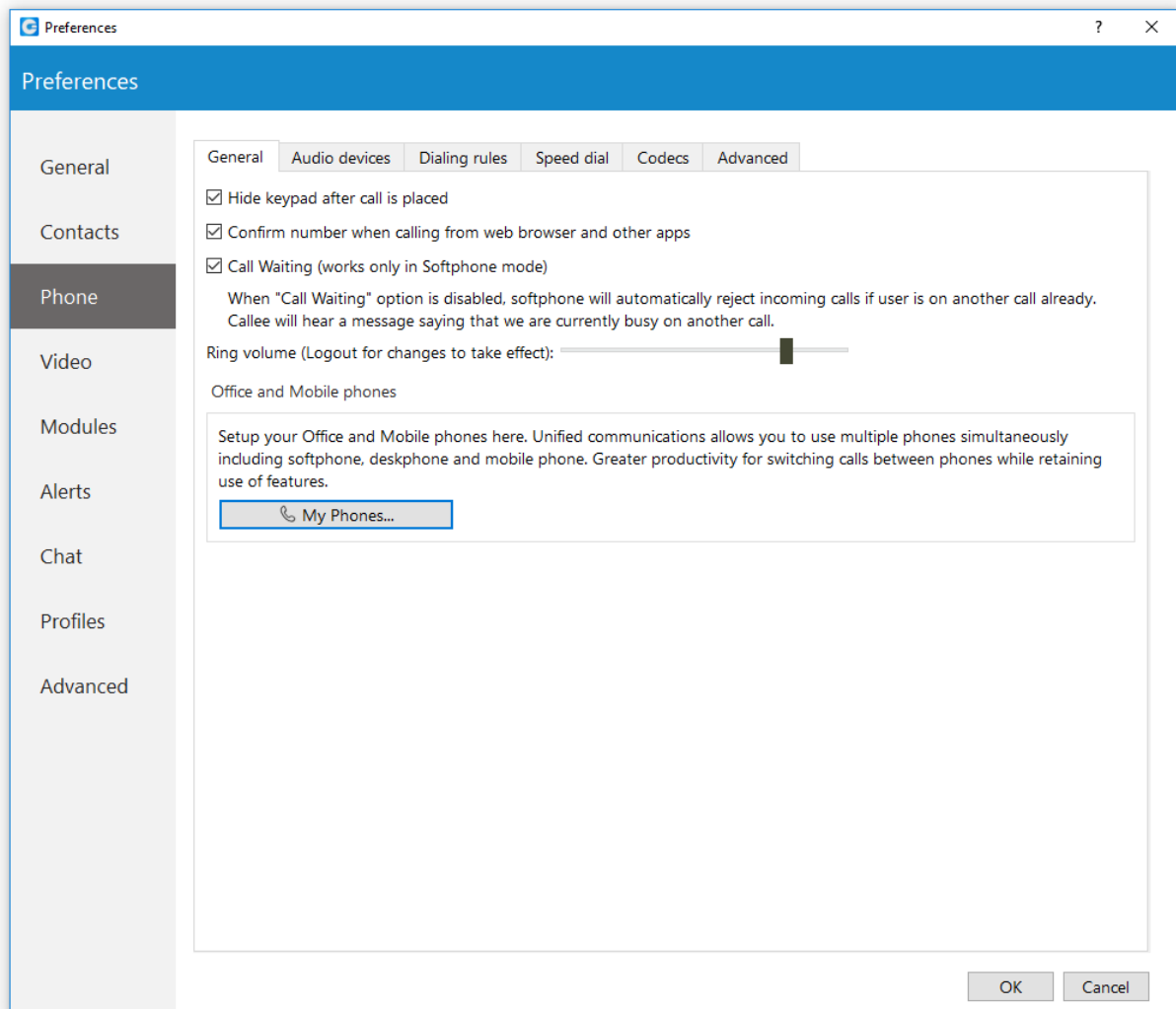
Next go to the *Google* tab. Here you can choose to integrate your google account contacts with GloCOM [ 5.1.1 ]. Simply check the “Enable Google contacts integration”, enter your Google email and password, and your Google contacts will sync automatically.

Outlook Plugin with GloCOM [ 5.1.1 ] navigate to the *Outlook* tab and check the "Enable Plugin in Outlook" Contacts box. This will enable you to initiate calls directly from Outlook. GloCOM [ 5.1.1 ] automatically syncs your Outlook contacts.

(When I receive a call from an unknown caller, automatically display the "new Outlook contact" window) option, when turned on, it will open a new Outlook contact form every time you receive a call on GloCOM [ 5.1.1 ] from a number that is not on your contacts list.



## Phone settings



To start click on the *Settings* icon inside toolbar, and navigate to the Phone Settings section. Under the General tab, check “hide the keypad after a call is placed” to minimize the Keypad once the call has been placed.

When turned on, “Confirm the Number when calling from web browser and other apps” will ask you to confirm the number and will also give you an option to make corrections if necessary. Use the ring Volume slider to adjust the ring volume. You will need to restart the application for changes to take effect. “My phones...” button allows you setup your deskphone, softphone, and add a mobile number.

Inside the “Audio Devices” tab, you can set input, output and ringtone device. It is recommended to leave these settings at default values.

Check “Enable Plantronics headset support” option in order to integrate a Plantronics headset with GloCOM [ 5.1.1 ]. This will enable the use of Plantronics headset buttons such as answer, hold, transfer...

The same applies for Jabra headsets. Turn on “Enable Jabra headset support” option, in order to integrate a Jabra headset with GloCOM [ 5.1.1 ].

Inside the “Dialing rules tab” you can set rules for outbound calls. e.g., If you enter 061 under “text to replace” and under “replacement text” you enter 0038761, GloCOM [ 5.1.1 ] will replace every phone number that has “061” with “0038761”. However, sometimes you would only want to replace numbers that begin with 061, and not the ones ending in 061...

For a more precise replacement you can use regular expressions. For example, if you enter 061{6}/d under text replacement, and “0038761/1” under replacement text and you turn regular expressions on, this will replace 061 digits of every number that begins with 061 and has 6 more digits with 0038761 followed by those 6 digits. E.g. 061-123-456 would be replaced with 0038761-123-456.

Enabling “Detect and format USA and UK phone numbers for outbound calls” option will auto detect and format your local USA&UK numbers so that they can go through the system. This may cause problems in some countries so be careful when using this feature.

Inside the Speed Dial tab click on the *Add* button and from a drop-down menu and choose a number from 1 to 99, and in the field next to it assign the phone number that you want to Speed dial. For example , dialing #7 will dial 061-123-456

To edit an existing speed dial number select the number from the list and click the *Edit* button, or press Remove to remove the number.

Inside the Codecs tab select the codecs that you wish to use. Some codecs offer higher quality but take more bandwidth, some offer better compression so they are less heavy on network resources... depending on your needs you might want to turn some codecs on or off, and if you have more than one codec you can sort them by priority using the up and down arrows on the right.

Inside the Advanced tab, you can choose to turn the encryption on or off for voice and video calls, or you can select “Use the settings from server” to use the settings that your admin has set.

Under the Register field you can set how often GloCOM [ 5.1.1 ] will send SIP register to the SIP Server or voip provider to let it know where it is. It is recommended to leave local sip port empty to allow SIP Protocol to use any port available. However, if you wish to restrict SIP (outgoing) traffic to a specific port you can enter the port number here.

Check the “Send keep alives” option to send SIP keep-alives to the server.

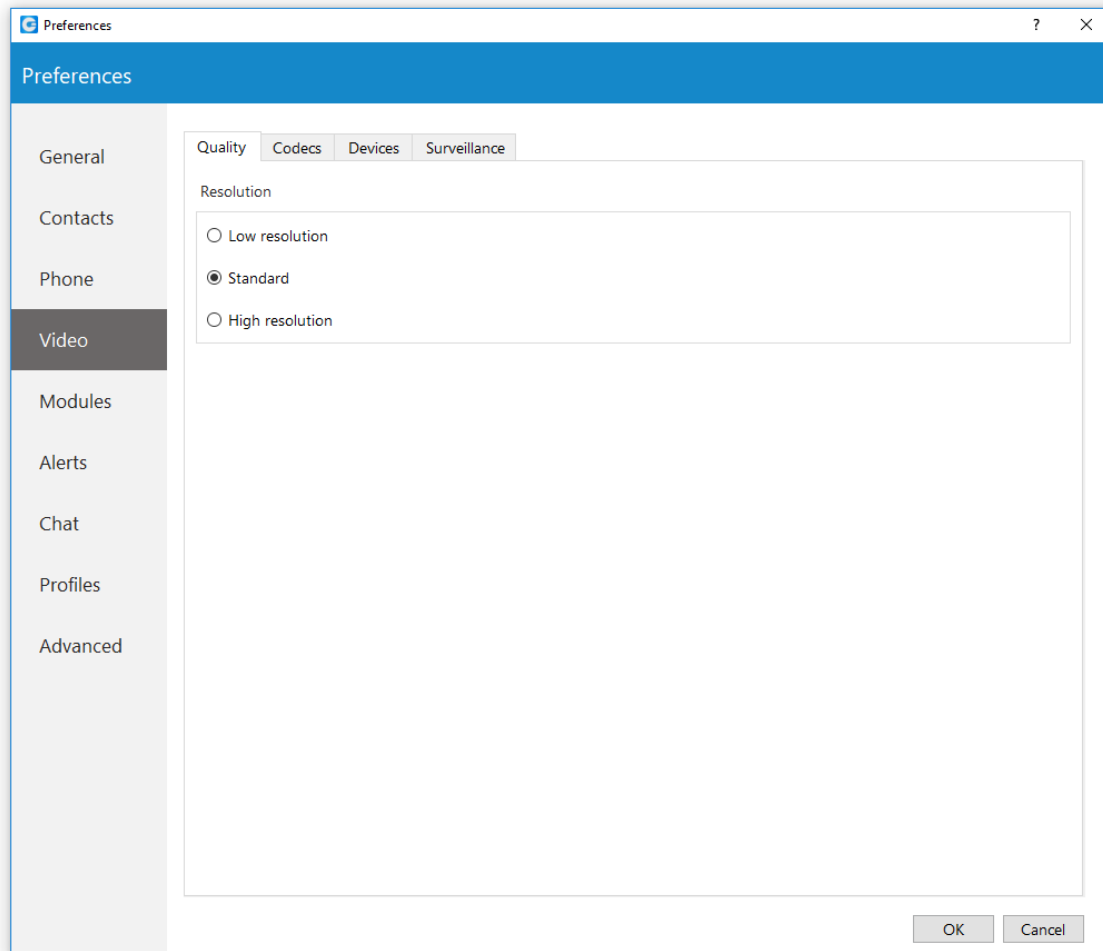
Check the “Enable QoS” to enable Quality of Service feature. QoS is a set of technologies that work on a network to guarantee its ability to dependably run high-priority applications and traffic under limited network capacity (must be supported by user network).

### **Call waiting added as a new feature in softphone mode.**



When "Call Waiting " option is disabled , softphone will automatically reject incoming calls if user is on another call already . Calle will heart message saying that user is curently bussy on another call.

## Video settings



Video Settings section is divided into 4 tabs. Inside the Quality tab, you can set the resolution of the video call. You should adjust these settings based on the quality of your network connection.

For example: If your bandwidth is low or you are experiencing temporary network issues, you can set the video quality to Low resolution to get better video call performance.

Inside the Codecs tab, you can enable or disable video codecs, and if you have more than one codec you can sort them by priority using the up and down arrows on the right.

Under Advanced codecs settings you can adjust how much compression the codecs will use. The higher the bitrate the less compression codecs will use, which directly relates to a better video quality but also larger files. Use default values for codecs if you are not familiar with video codecs.

Inside the Devices tab you can select the video capture device.

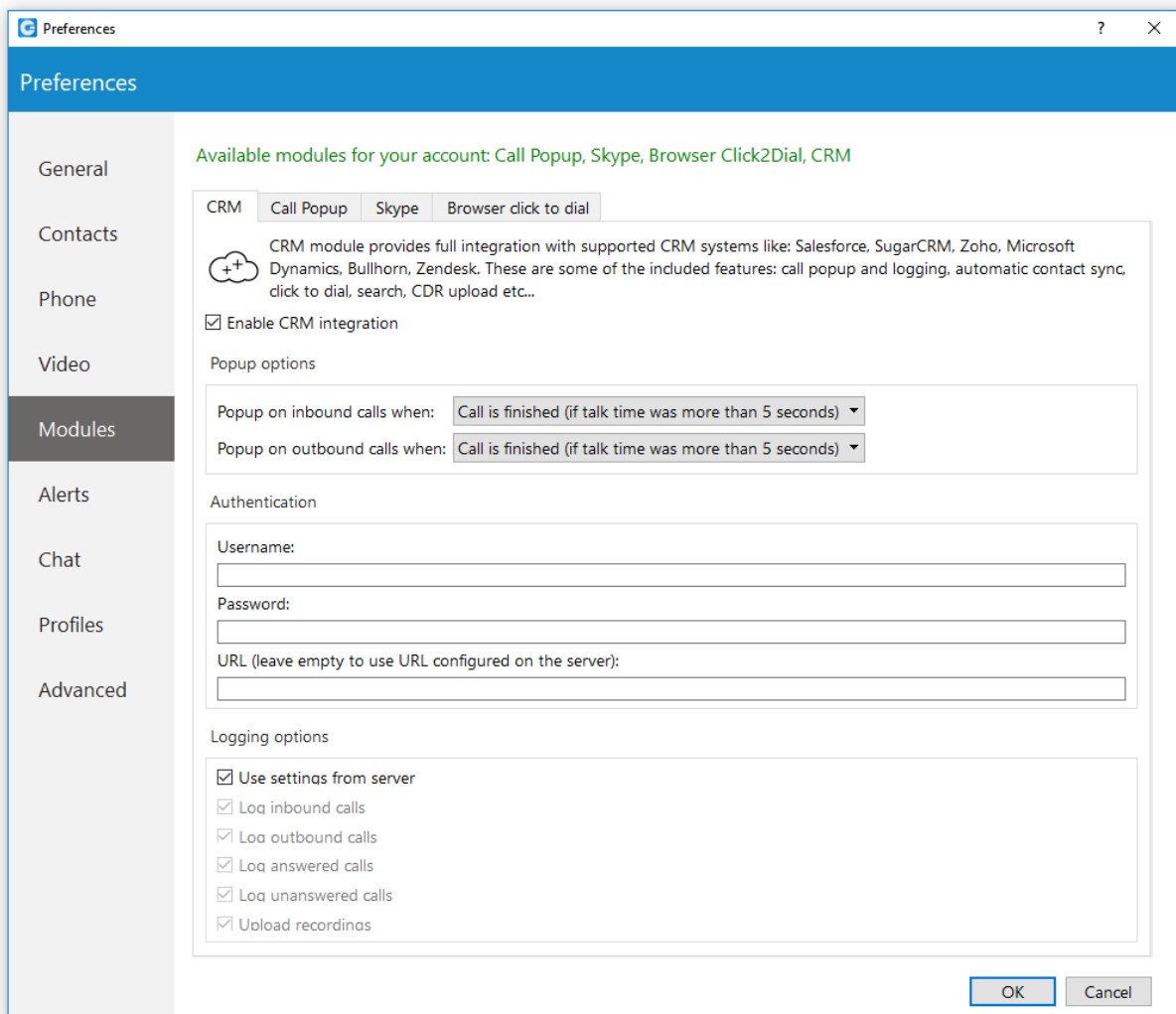
e.g., if you have a laptop with an integrated web camera, and you connect another web camera to your laptop, you can specify which camera GloCOM [ 5.1.1 ] will use for video call from a drop-down menu.

Next, inside the surveillance camera tab you can enable or disable surveillance camera and choose if the surveillance camera video should always stay on top even if another window is selected.

Under the URL field, enter the url of your IP surveillance camera stream.



Please be aware that only MJPEG stream over HTTP is supported at the moment.



GloCOM [ 5.1.1 ] is compatible with several Customer Relationship Management solutions, such as Salesforce, SugarCRM, Zoho, Zendesk, MS Dynamics, and Bullhorn.

To enable CRM integration with GloCOM [ 5.1.1 ], click on the *Settings* icon, navigate to the CRM section and check the box next to “Enable CRM integration”. Under the “Popup Options” you can set when a page with customer information should open. You can have it open when you answer the call, or immediately when your phone starts ringing, before you even answer, and you can choose not to have the customer page open at all on incoming calls. On outbound calls, you can have it pop up when the call is initiated or when the call is answered, and same as with incoming calls - you can disable it by selecting Never.

Under Authentication you can enter account details for your CRM. Each CRM is different and requires you to enter a security token, password or a combination of both.

Next, under logging options, you can specify which information you want to log... or you can choose to log information that your admin has set by selecting “Use the settings from the server” option.

Call Popup Settings, call popup module can be used to push the call details to browser-driven third-party software. You can set the call popup to open when call has started, when call has been answered and/or when call has finished. For each setting you can specify to enable it for inbound and/or outbound calls, and you can turn on silent mode. In the silent mode, a URL request will silently be sent to the server, meaning it will not open a web browser. Call popup is macro based. In the URL field the following macros can be used: **callerid, callerid name, extension, duration, call id, direction, queue number and queue name.**

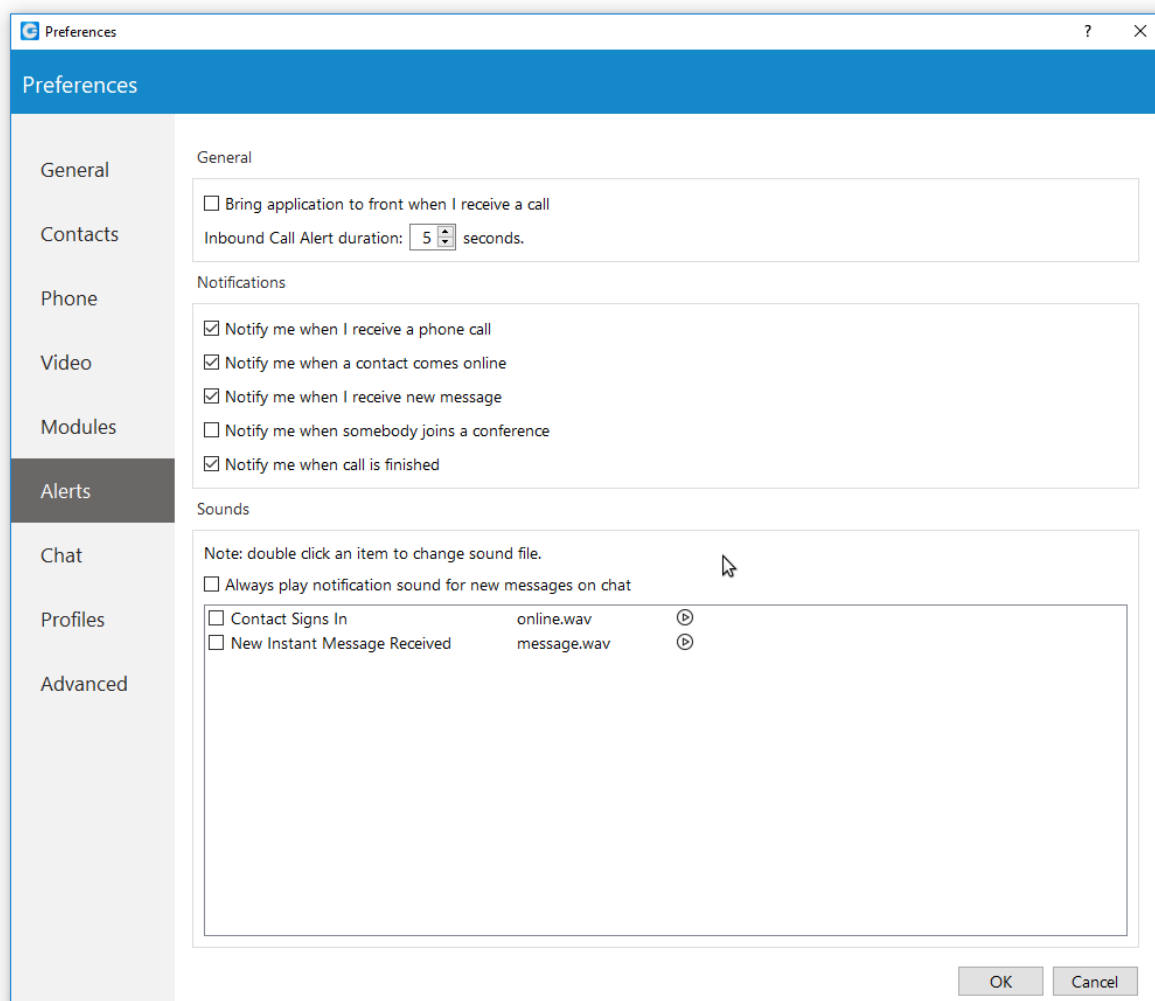
e.g., In Call started URL field you could enter “yourcrm.com/calls?id=%callerid%” and check the inbound calls bellow. Now, whenever you receive a call from customer call popup will open a web browser and will write the customer’s phone number.

You can send all these information silently to your CRM server and create reports such as how many inbound calls you have received, how many outbound calls you have made, average call duration etc.



CRM popup module > added option to popup on call finished (if call lasts more than 5 seconds)

## Alerts Settings



To start click on the Settings icon inside toolbar and navigate to the Alerts section. Check the “bring application to front when I receive a call” option to bring GloCOM [ 5.1.1 ] to front whenever someone calls you. You might not want to have your work interrupted by call alerts, in that case you can uncheck this option. You will still be able to receive the calls, however, you will have to navigate to the application yourself.

Inbound Call Alert duration can be set between 5 and 15 seconds. This option controls the duration of a small notification window that pops up in lower right corner of the screen whenever you receive a call.

To turn off inbound call alert completely, simply uncheck the “Notify me when I receive a phone call” option. You can also set to receive notifications when a contact comes online, when you receive a new message, when somebody joins a conference and or when call is finished. Only the duration of the call alert notification can be adjusted, all other notifications have a fixed duration of 5 seconds.

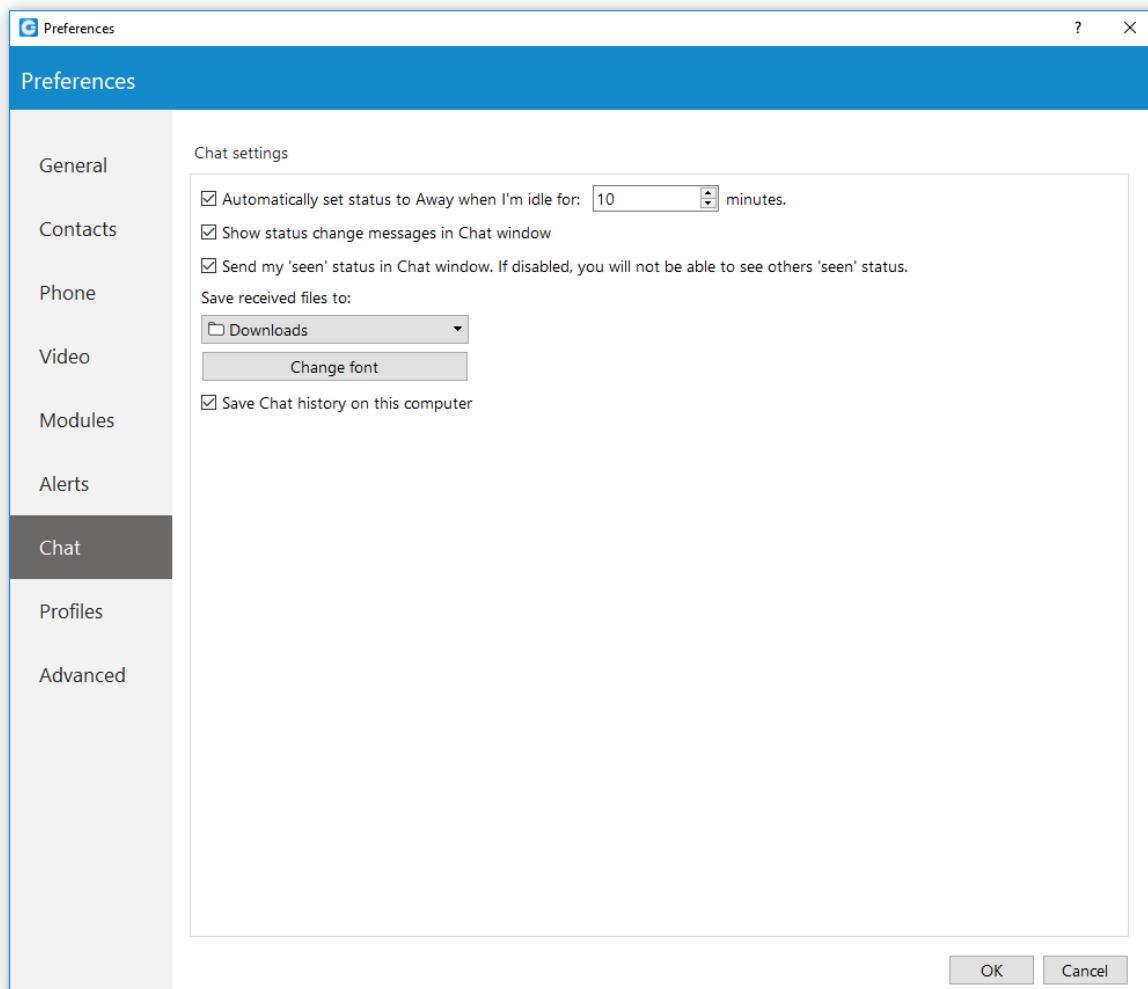
Under the Sounds section, you can choose to turn sound notifications on or off for contact sign in and or for new chat messages. If you select “Always play notification sound for new messages”, you will hear a sound notification for every message received, even if you have a



chat window currently open. For this feature to work the “New instant message received” option has to be selected as well, otherwise you will hear no sound.

To preview a sound, click on the play button on the right, and if you wish to change a sound, double-click an item and select the sound file you wish to use. Please note that only .wav files are supported.

## Chat Settings



To start click on the Settings icon inside toolbar, and navigate to the Chat section. If you want GloCOM [ 5.1.1 ] to change your online status to Away when there is no user activity for a certain period of time, enable the “Automatically set status to Away when I am idle option”, and set the time anywhere between 1 and 60 minutes. For example, if you set it to 10 minutes, and there is no user activity on the computer, GloCOM [ 5.1.1 ] will change your current status to away after 10 minutes have passed. As soon as the GloCOM [ 5.1.1 ] register any user activity it will change from away status to your previous status. This option does not work if you have set your status to offline.

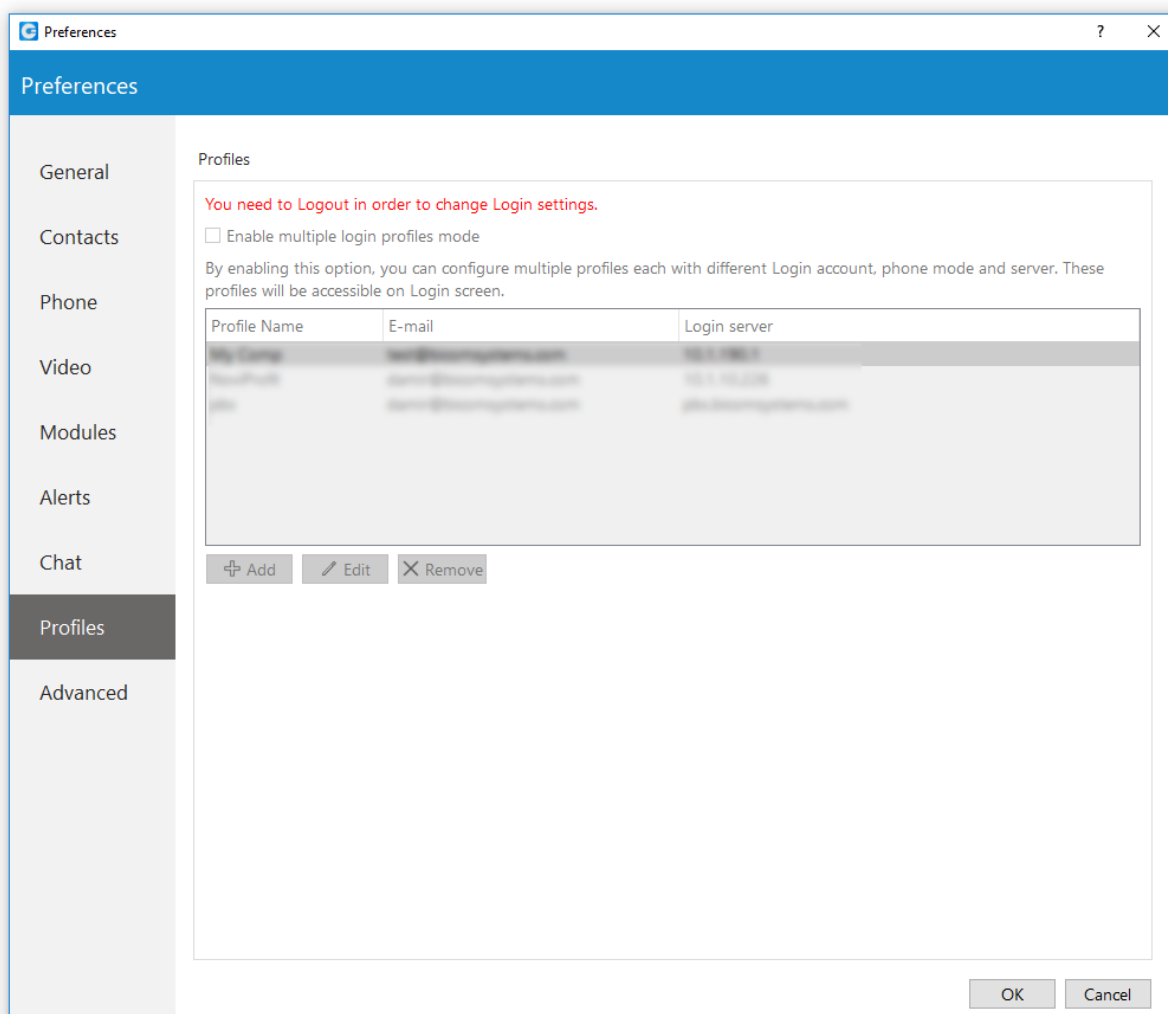
“Show status change message in chat window option”, if checked, will display status change message in every active chat window.

If you enable the “send my seen status” option, you will be able to see when someone has read your message, and vice versa, other users will be able to see when you have read the message they have sent you. If you disable this option, you will not be able to see when someone has read your message nor will other users be able to see when you have read messages they have sent you.

Below the “Save received files” click on the drop-down menu and choose Other... to specify the location where GloCOM [ 5.1.1 ] will save received files. And under the “Change font” menu you can choose the default font for chat layout.

To save all your chat history on your computer, check the box next to “Save Chat history on this computer”.

## Profiles Settings



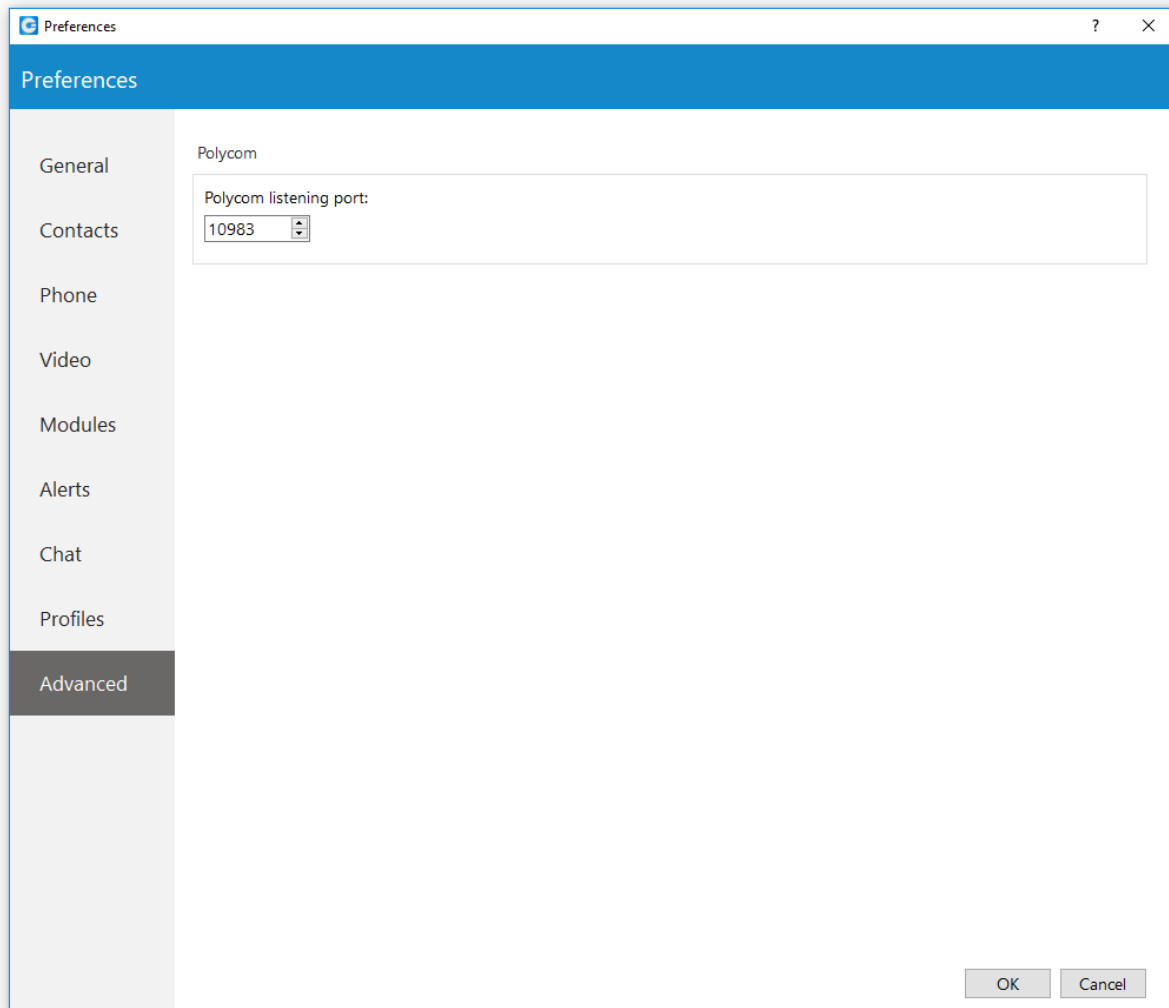
To enable profiles click on the “Enable multiple login profiles mode”.  
With this option enabled you can add, edit or remove an existing profile.

To add a profile click the Add button, follow the setup wizard, enter the profile name, enter your GloCOM [ 5.1.1 ] email and password, and under the Advanced tab enter the server address, and if needed specify the SIP proxy as well. When done click *Next* to continue.

Adjust the phone settings to your preference and click Next, review your information once more and click Finish to create a profile. Once created you can edit the profile by selecting it from the list, and clicking the *Edit* button or you can remove selected profile by clicking the *Remove* button.

To log in with your newly created profile on the GloCOM [ 5.1.1 ] login screen, from a profile drop-down menu select your profile and click on the *Login* button.

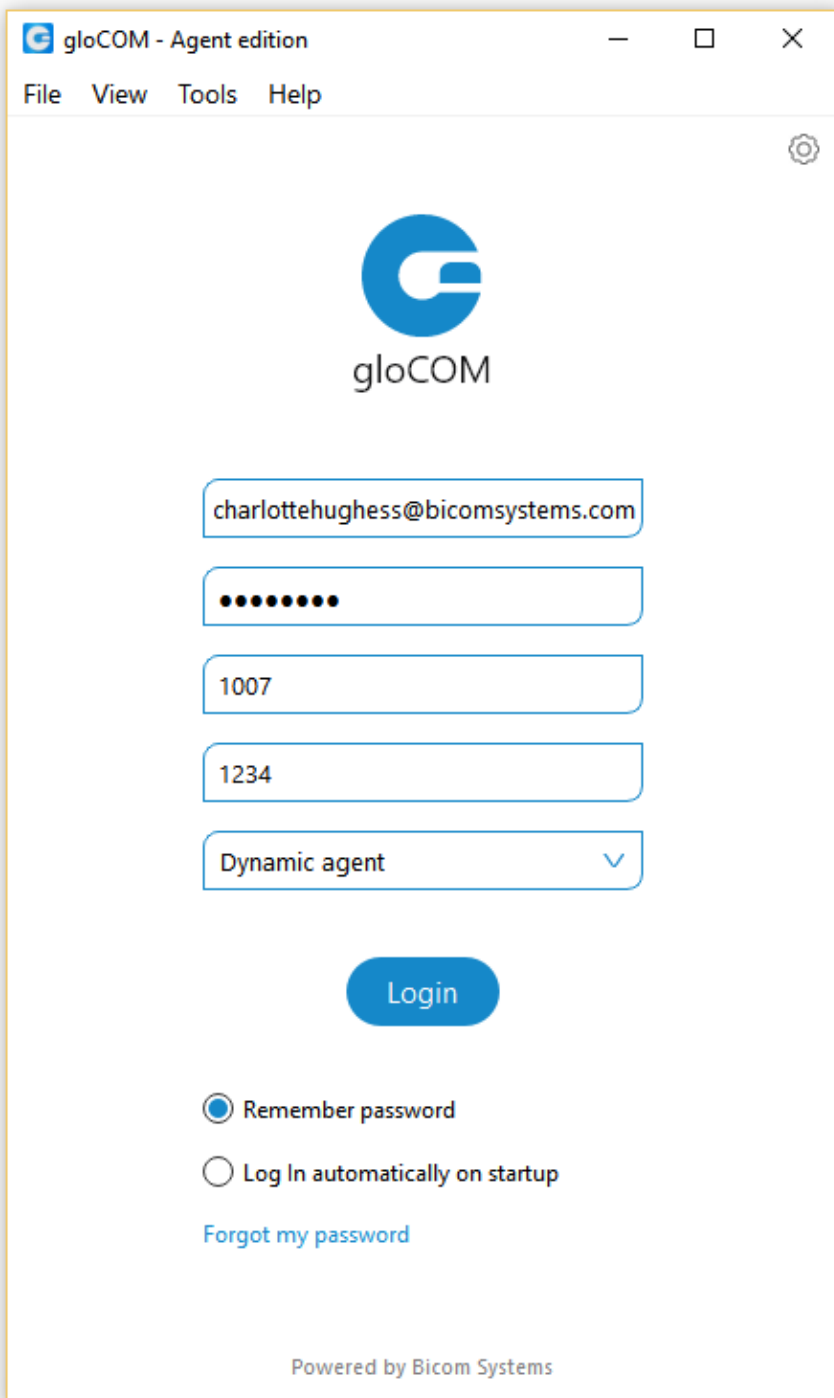
## Advanced



In the *Advanced* menu you can change the Polycom listening port to suit requirements of your Polycom phone.

The default port is set to 10983 which can be changed by clicking inside the box and entering your listening port number.

## Agent login



gloCOM - Agent edition

File View Tools Help

gloCOM

charlottehughess@bicomsystems.com

.....

1007

1234

Dynamic agent

Login

☒ Remember password

☐ Log In automatically on startup

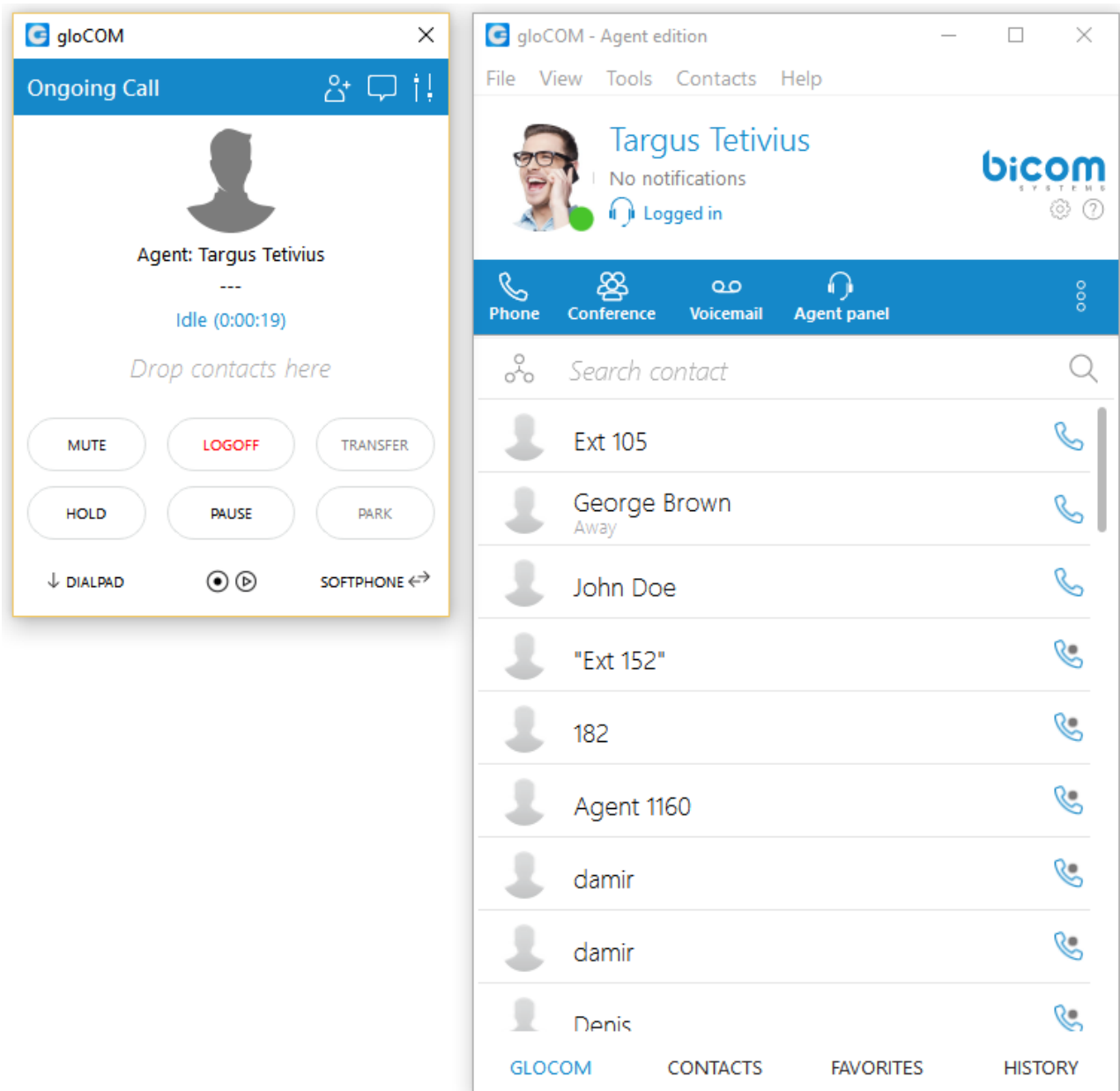
[Forgot my password](#)

Powered by Bicom Systems

- E-mail: Provide the e-mail address that is assigned to your extension.
- Password: Enter the password that you created during the GloCOM [ 5.1.1 ] configuration.
- Agent number:  
Enter the agent number.
- Agent PIN:  
Enter the agent PIN number.
- Callback agent/Dynamic agent: Choose if you want to log in as callback or dynamic agent.
- Remember password  
Check if you want GloCOM [ 5.1.1 ] to save your password.

- Log In automatically on startup  
When this option is turned on, GloCOM [ 5.1.1 ] will log in automatically. Every time GloCOM [ 5.1.1 ] is started, it will automatically log in.
- Forgot my password  
If a user forgets their password, they can recover it by clicking the 'Forgot my Password' link. The user will receive a password recovery link via email.

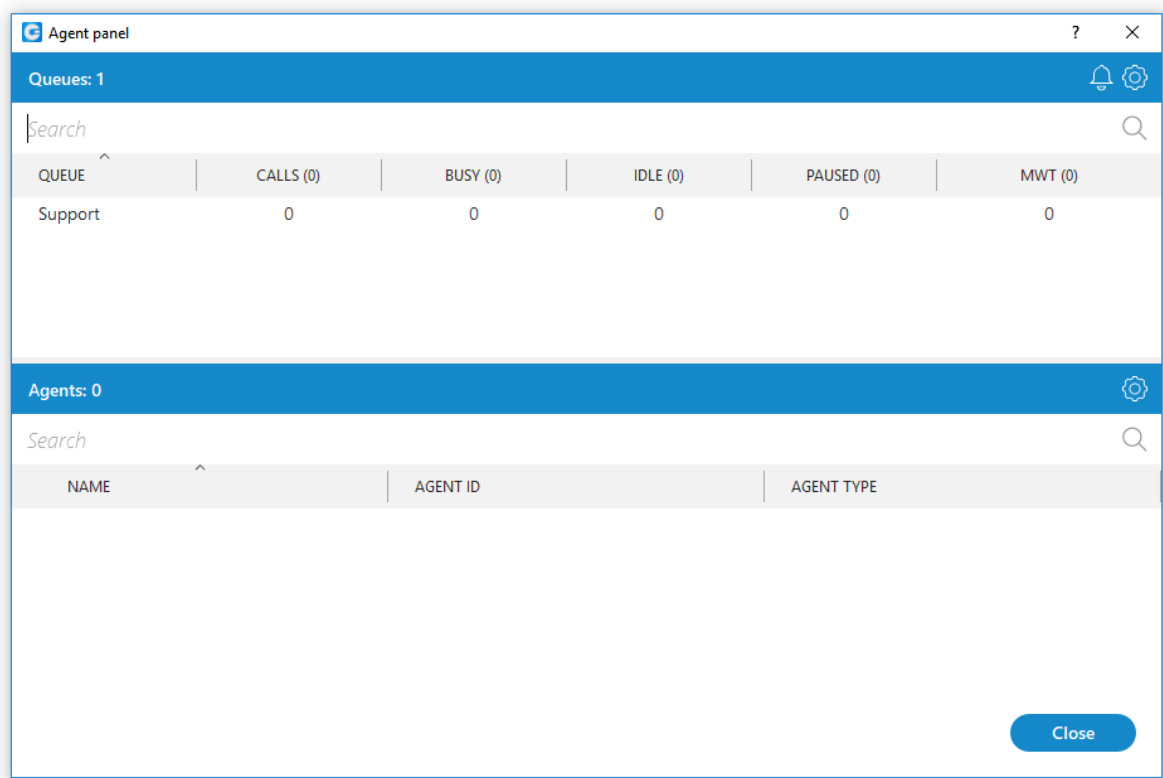
## Agent quick menu



**Inside agent quick menu:** agents have option to log in as a **Callback** or **Dynamic** agent, also to pick a pause reason when on pause (defined in PBXware)

# Agent panel

New design for Agent panel





# Supervisor panel

Supervisor panel silhouette design overview.

gloCOM - Supervisor Panel

Supervisor

Queues

Wallboard

Agents

Graphs

Agent Inbound Stats

Queue Calls

Inbound Calls

Outbound Calls

Alerts

NAME	TOTAL CALLS	ANSWERED	UNANSWERED	WAITING	IDLE	BUSY	PAUSED	AVG WAIT TIME	MAX WAIT TIME	ANSWERED (%)	UNANSWERED (%)	SERVICE LEVEL (%)
Testq138	0	0	0	0	0	0	0	0	0	0	0	100
Testq137	0	0	0	0	0	0	0	0	0	0	0	100
Testq136	0	0	0	0	0	0	0	0	0	0	0	100
Testq135	0	0	0	0	0	0	0	0	0	0	0	100
Testq134	4	4	0	0	4	0	0	4	8	100	0	100
Testq133	0	0	0	0	0	0	0	0	0	0	0	100
Testq132	0	0	0	0	0	0	0	0	0	0	0	100
Testq131	4	0	4	0	0	0	0	0	0	0	100	100

① Total number of queues: 8

Close

gloCOM - Supervisor Panel

Supervisor

Queues

Wallboard

Agents

Graphs

Agent Inbound Stats

Queue Calls

Inbound Calls

Outbound Calls

Alerts

TESTQ134

Total Calls	Answered	Unanswered
4	4	0
Waiting	Idle	Busy
0	4	0
Paused	Avg Wait Time	Max Wait Time
0	4	8
Answered (%)	Unanswered (%)	Service Level (%)
100	0	100

gloCOM - Supervisor Panel

Supervisor

Queues

Wallboard

Agents

Graphs

Agent Inbound Stats

Queue Calls

Inbound Calls

Outbound Calls

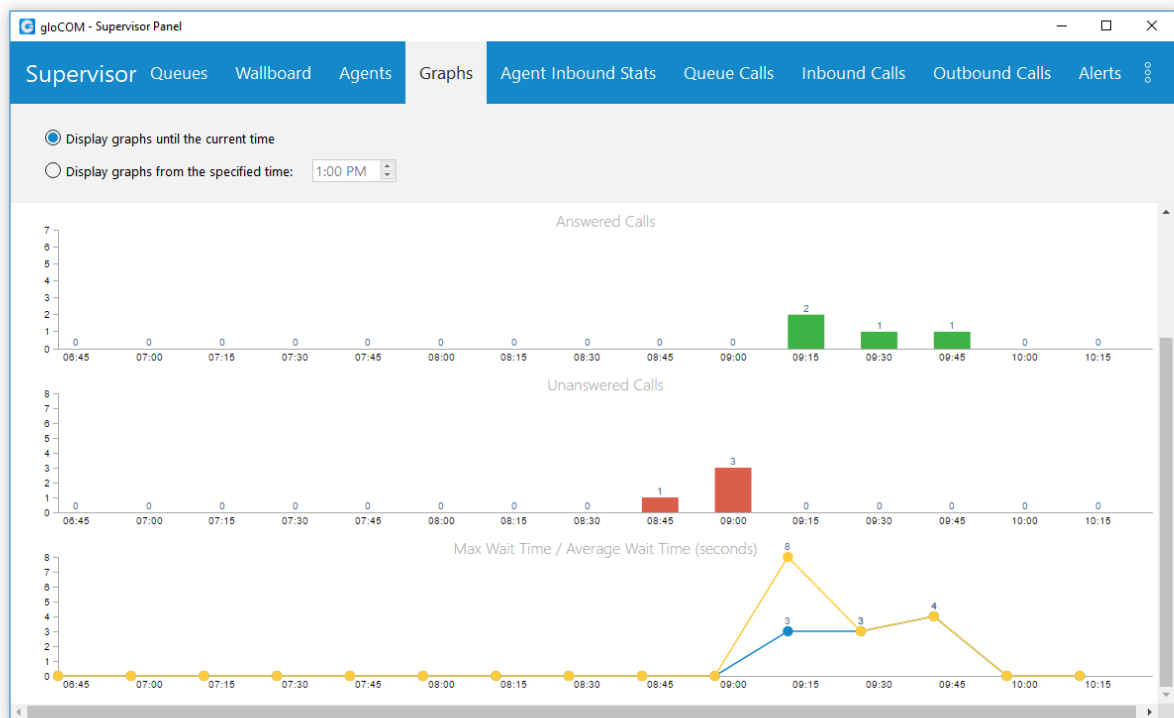
Alerts

AGENT NAME	AGENT ID	STATE	TIME IN STATE	UNIQUE CALL ID	CALL DIRECTION	CALL TYPE	CALL INFO	LOGIN TIME	LOGIN TYPE
Agent 1004 Blind Ext 104	1004	IDLE	01:43:41					10:21	Callback
Test 150	150	IDLE	00:36:53					N/A	Member
Agent 1001 Blind Ext 101	1001	IDLE	00:36:47					00:46	Callback
Ext 152	152	IDLE	00:36:53					N/A	Member
Ext 153	153	IDLE	00:36:53					N/A	Member
Agent Test	1010	IDLE	01:43:41					10:21	Callback

①

Logged in agents and extensions: 6

Close



gloCOM - Supervisor Panel

Supervisor

Queues

Wallboard

Agents

Graphs

Agent Inbound Stats

Queue Calls

Inbound Calls

Outbound Calls

Alerts

AGENT NAME	AGENT ID	NUMBER OF CALLS	TALK TIME (AVG/TOTAL)	IDLE TIME (AVG/TOTAL)	LOGGED IN TIME	NOT READY TIME	NOT READY COUNTS	LOGIN COUNTS
Test 150	150	0	0 / 0	N/A	N/A	N/A	N/A	N/A
Ext 153	153	0	0 / 0	N/A	N/A	N/A	N/A	N/A
Ext 152	152	0	0 / 0	N/A	N/A	N/A	N/A	N/A
Agent Test	1010	0	0 / 0	10 h 23 min 21 sec / 10 h 23 ...	10 h 23 min 21 sec	0	0	1
Agent 1009 Bind ...	1009	0	0 / 0	0 / 0	0	0	0	0
Agent 1008 Bind ...	1008	0	0 / 0	0 / 0	0	0	0	0
Agent 1004 Bind ...	1004	0	0 / 0	10 h 23 min 21 sec / 10 h 23 ...	10 h 23 min 21 sec	0	0	1
Agent 1003 Bind ...	1003	0	0 / 0	0 / 0	0	0	0	0
Agent 1002 Bind ...	1002	0	0 / 0	0 / 0	0	0	0	0
Agent 1001 Bind ...	1001	3	5 sec / 16 sec	29 min 38 sec / 1 h 28 min 55 ...	1 h 29 min 11 sec	0	0	3

Total: 10, Logged In: 6, Talking: 0, Paused: 0

Close

# Skype for Bussines Module

Skype For Business module is used for integration between Skype For Business and GloCOM [ 5.1.1 ]. The idea behind this module is to provide integration between Skype For Business client and user’s phone system (PBXware).

It consists of four parts:

- Presence
- Click to dial
- Conferencing
- Control of ANY SIP deskphone/softphone/mobile device registered on the PBXware telephony platform from the PC

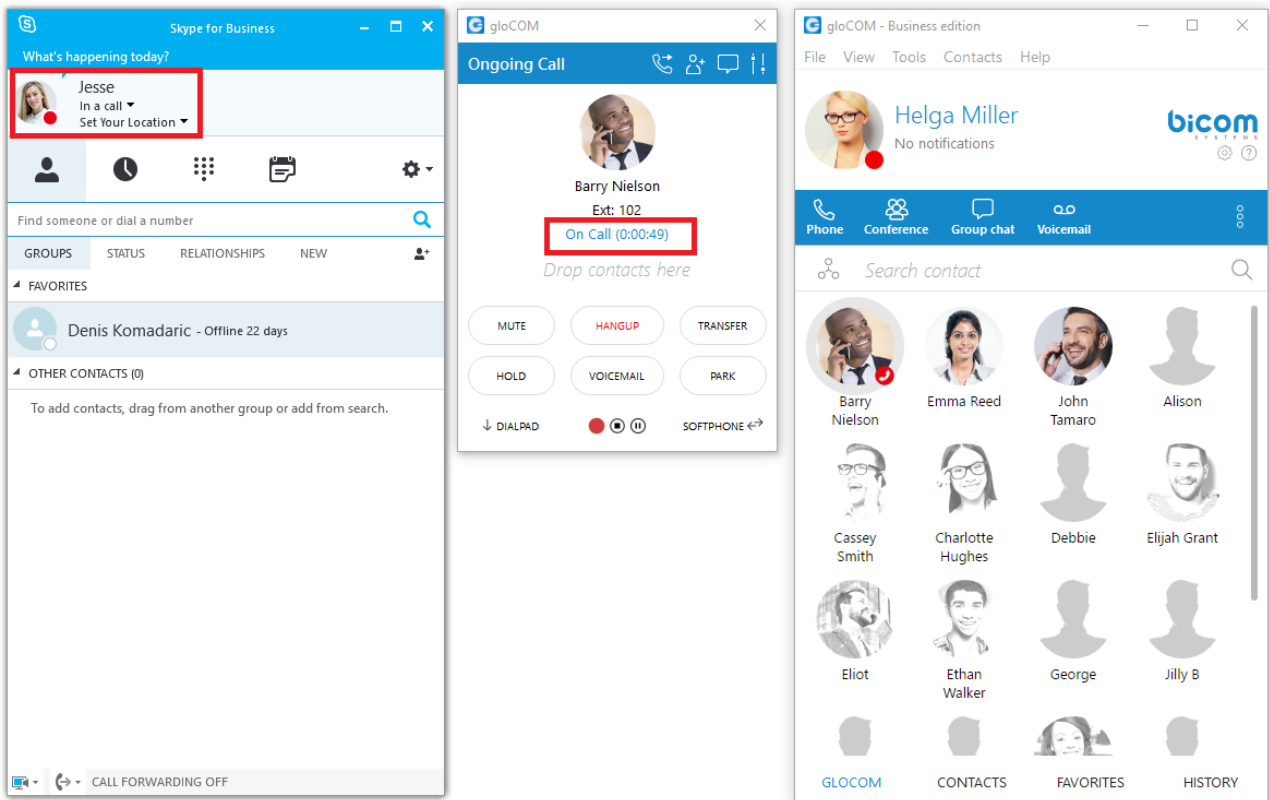


GloCOM [ 5.1.1 ] must be installed on the PC where Skype For Business client is running

## Presence

Whenever a user is on a call with ANY of their devices, including deskphone, softphone or mobile phone, Skype For Business will change its presence automatically, and other Skype users will see this presence as “On a call”. Once the call is completed, Skype presence will revert back to the previous state.

Red marked squares showing status change inside Skype for Bussiness

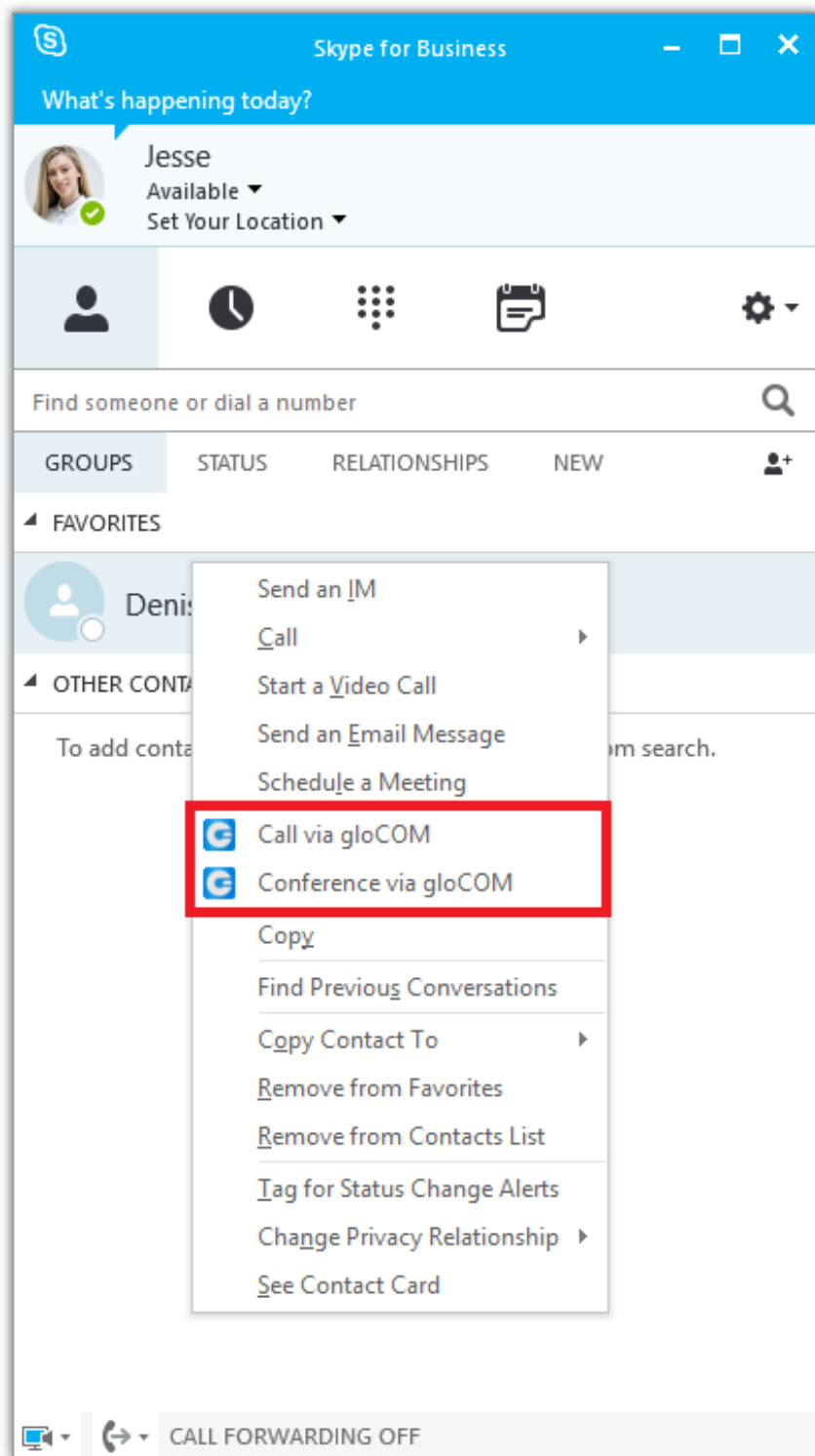


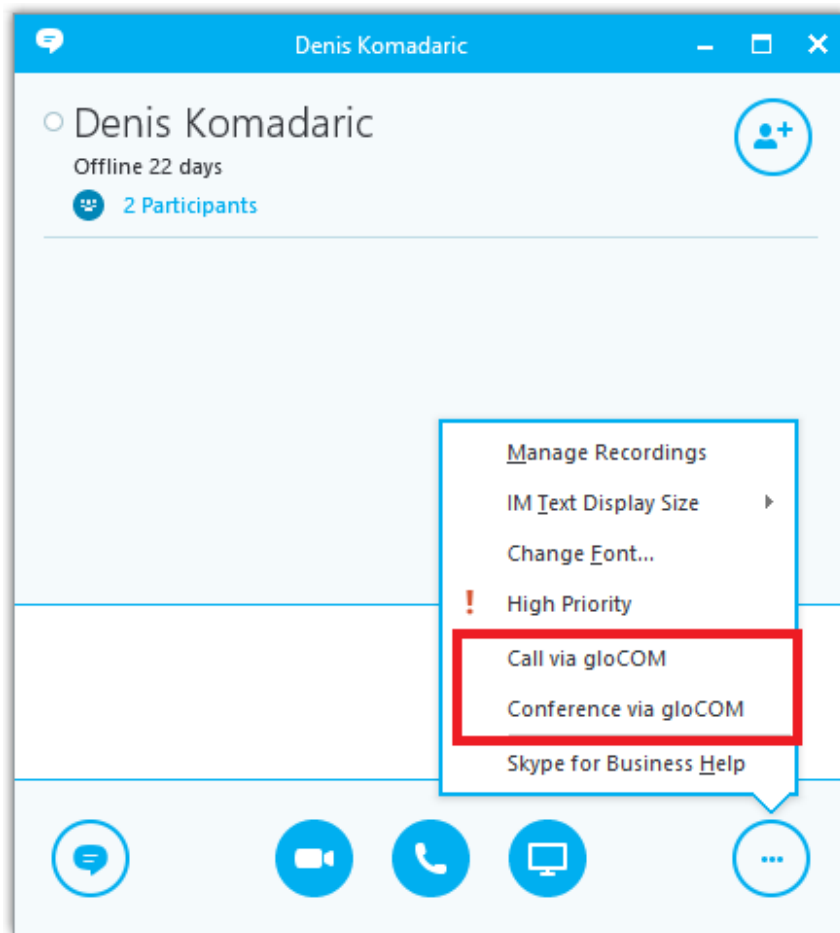
## Click to Dial

The click to dial plugin allows you to make regular or conference calls from Skype For Business using PBXware phone system. It allows the user to use ANY of their devices to make the call through their Phone System.

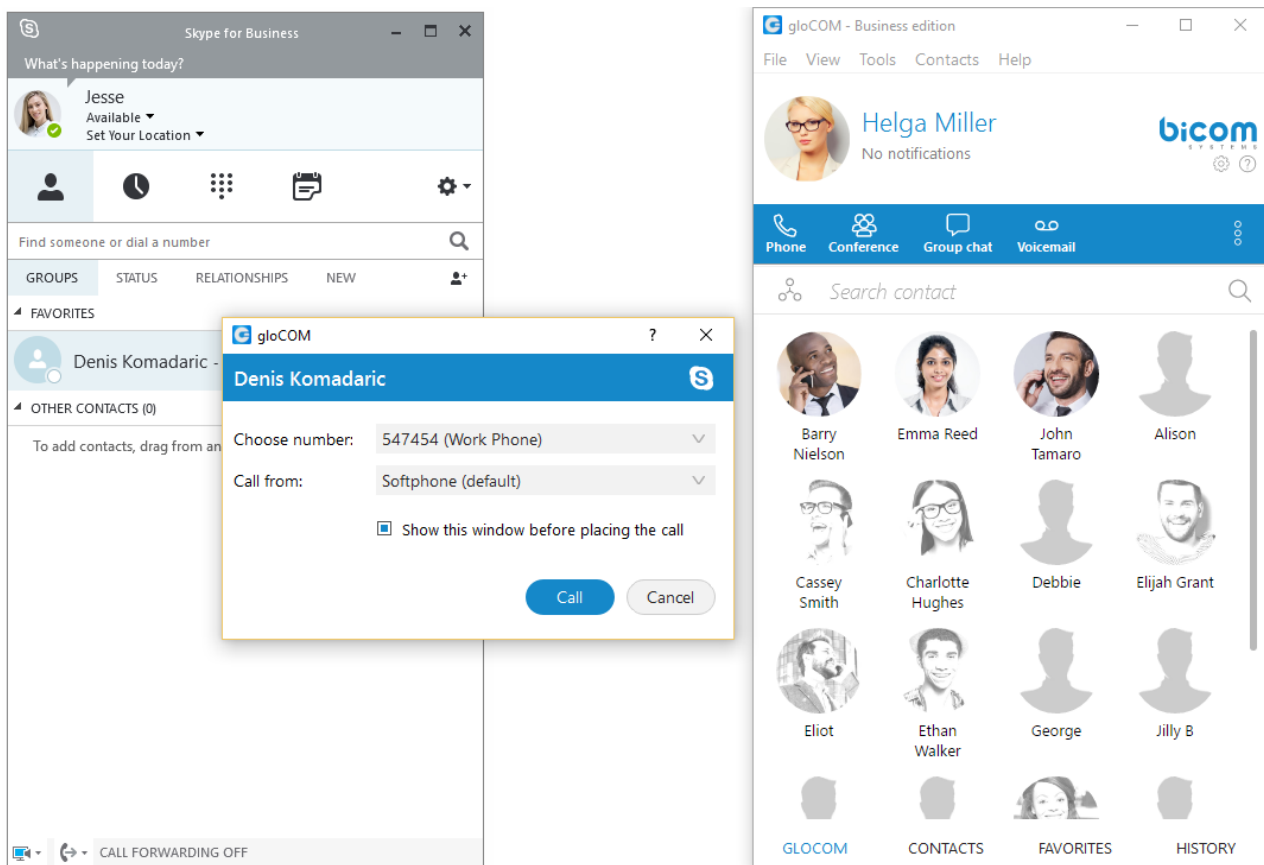
This includes: deskphone, softphone and mobile phone.

The user can even make a call from Skype with a single click through the mobile network (GSM), and Skype will still show its status as “On Call” until user hangs up on GSM. When click to dial plugin is enabled, two options appear in Skype For Business: **“Call via GloCOM [ 5.1.1 ]”**, and **“Conference via GloCOM [ 5.1.1 ]”**





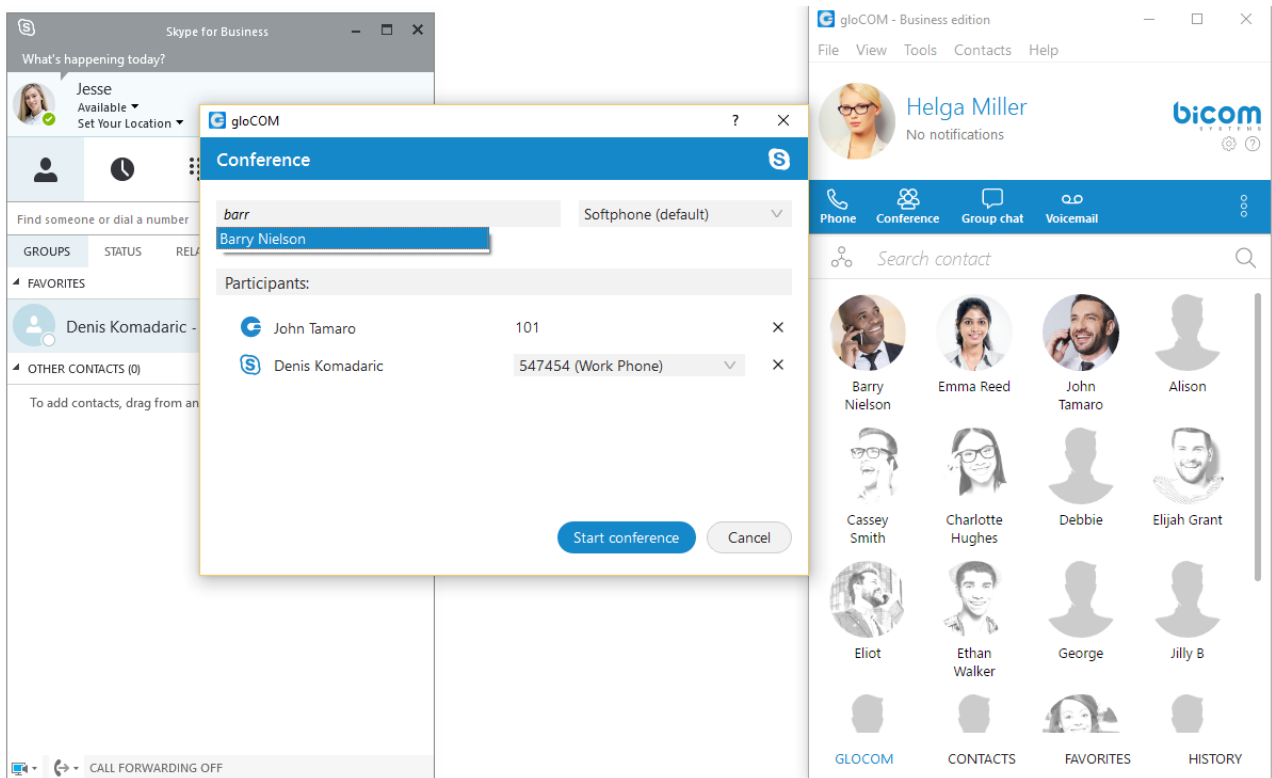
When we click on the “Call via GloCOM [ 5.1.1 ]” option, a dialogue appears, as seen in the next image. We have to choose the contact number that we want to call and the device from which we want to make a call. Only one Skype For Business contact can be selected if we want to use this option. If check box below "**Show this window before placing a call**" is selected, every time we are placing a call from Skype for Bussiness this windows will popup (this can be changed in preferences).



Once we press “Call”, the call will be placed, in this case using our deskphone.

## Conferencing

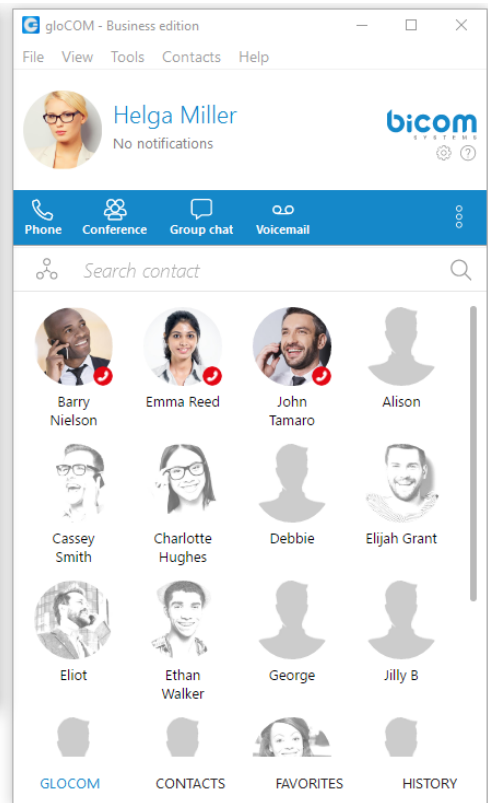
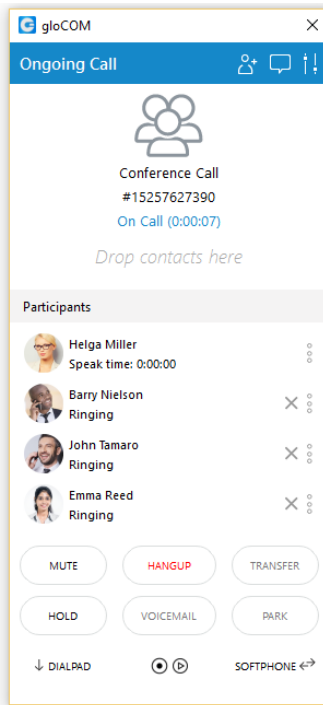
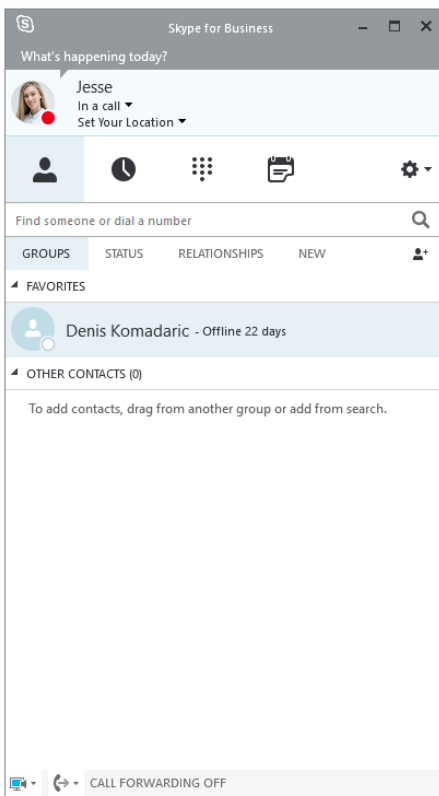
Unlike the previous option, one or more users can be selected in Skype For Business, and after clicking on the “Conference via GloCOM [ 5.1.1 ]” option, a dialogue appears, as seen in the next image.



We can also invite GloCOM [ 5.1.1 ] contacts in this conference. We add them by typing their name or number into search field where we can also enter any other number we want, and then press “Enter”. [X] button is used to remove contact/number from the list of users that we want to invite to the conference.

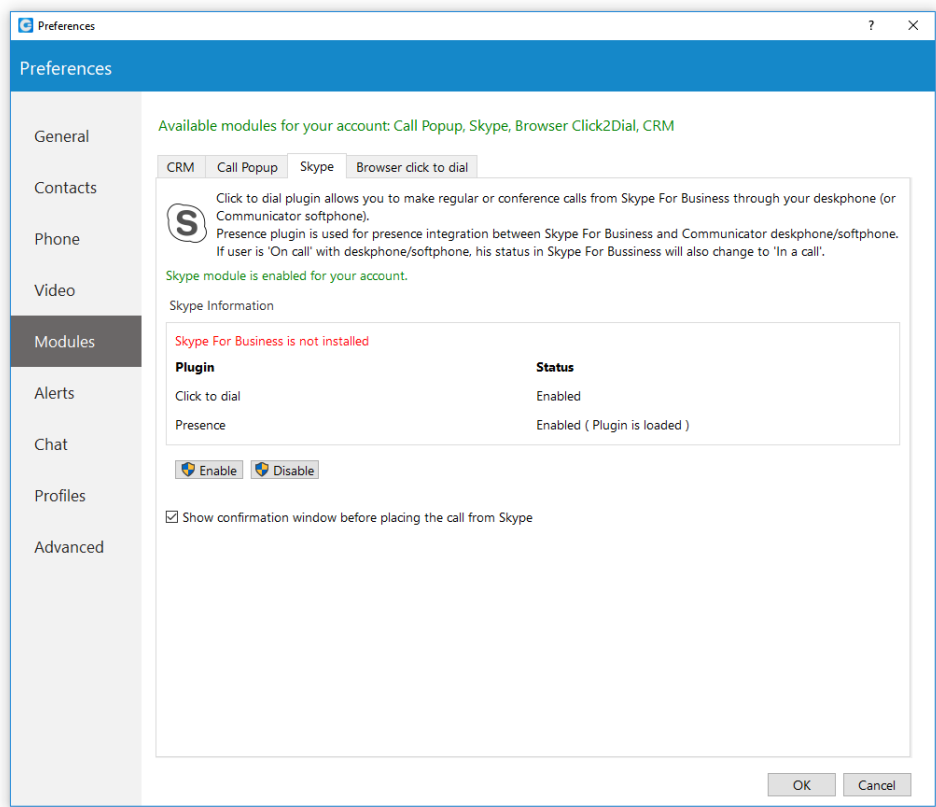
Once we press “Start Conference”, an audio bridge will be automatically created on the PBX, and all the invitees will join automatically. We will join on our deskphone in this example. Although the call is in progress on our deskphone, we can see and control this audio conference on the PC in the GloCOM [ 5.1.1 ] app, as displayed in the next image.

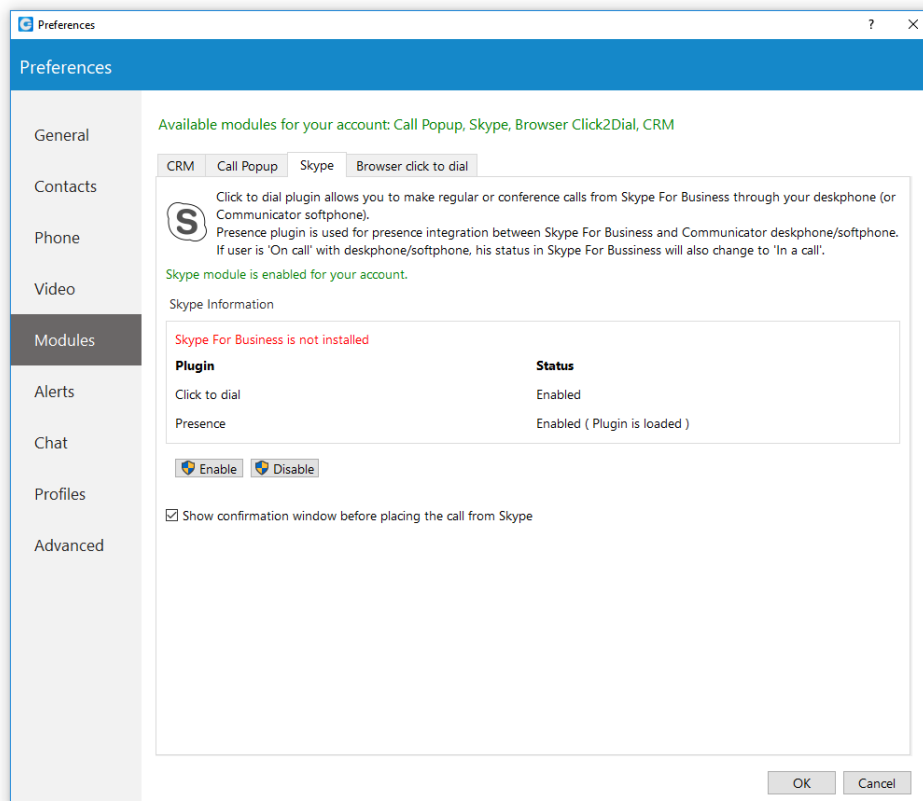




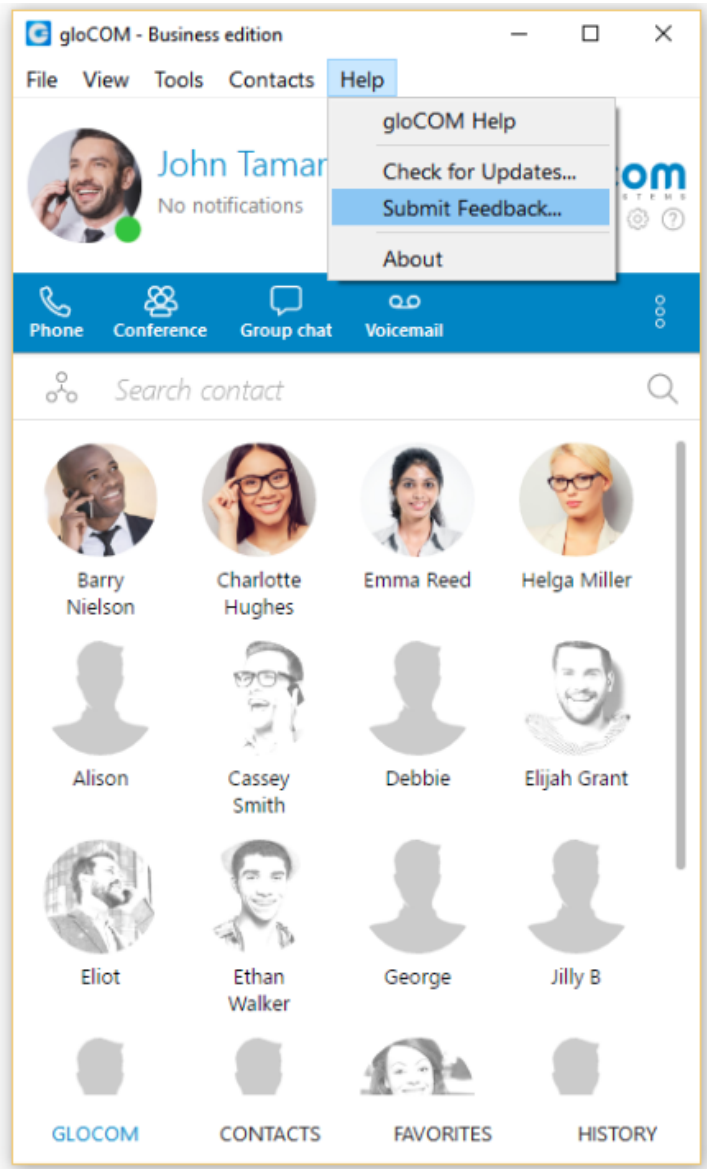
# Settings

If we want to enable/disable Skype For Business module plugins for all GloCOM [ 5.1.1 ] users on one computer, we need to navigate to Preferences > Modules > Skype. After we enable/disable Skype For Business module plugins, we have to restart the Skype For Business application in order to apply the changes made. Even if these plugins are enabled, we can use them only if the logged user has Skype For Business module enabled by supplier.





# Submit Feedback option




User can now easily send feedback from the "Help > Submit Feedback.. " menu

## Other fixes and improvements

1. Upgraded all backend libraries to the latest versions on Windows and MacOSX.
2. OpenGL rendering and crashing issues on Windows with bad drivers
3. Discrete GPU was used all the time on OSX
4. Fix for max wait time in agent edition
5. Send 180 Ringing for incoming calls
6. Enable high dpi support on Windows and Linux
7. Att xfer and bug in supervisor edition with talk time for agent
8. Fix crash when doing transfer of call
9. Fix click 2 dial bug on Mac OSX
10. Fix for missed calls bug. Handle "answered-elsewhere" from pwproxy
11. Fix crash in voicemail dialogue
12. Fix bug with confirmation dialogue when dialing from browser on Mac.
13. UDP max packet limitation issue fixed (calls would not pass through)
14. Attended transfer does not work when dynamic agent is on call and does att xfer from GloCOM [ 5.1.1 ] app
15. Fix crash in voicemail dialog
16. Wrong callerid and cname for inter-tenant calls
17. Anonymous calls still show callerid in GloCOM [ 5.1.1 ] desktop
18. OSC not showing menu properly
19. Chat window rendering problems on Retina screens
20. Fix: Switch Phone does not ring new Mobile apps
21. "Urgent" voicemail in GloCOM [ 5.1.1 ] is now visible and marked as "Urgent"
22. High CPU usage when typing in chat window.
23. If one changes callerid in GloCOM [ 5.1.1 ], CRM and CallPopup modules would not popup. Also, call history was broken (dialled tab was showing \*65\*calleird\*destnumber)
24. AWT in Graphs View (Supervisor Edition) was displaying wrong values (~0 all the time)
25. Several visual fixes in call window and conference module dialog
26. Renamed NOT\_READY - > PAUSED state in Supervisor Agents view
27. Video Preview could not be closed from preferences dialog using X button
28. When offline in chat, and user press tab on chat window, it will change tab/user but not the content of the chat window

- 29. Scroll bar on high dpi monitor on Windows is way too large
- 30. CallerID bug. If user sets callerid A in phone dialog, and admin in meantime changes or removes that callerid on server, on next login phone dialog will show as "default callerid", but application will still in background try dialing with old callerid. User would not be aware about that.
- 31. After any kind of reload on server, departments menu would not work (user can click on icon, but no popup menu appears).
- 32. Departments icon is changed when user selects one of them.
- 33. Several UI improvements (font on Windows in list view mode, scroll bar color, conference icon in call history, login view).
- 34. Handle Escape key press in main window to clear search box and show all users.



Bicom Systems (USA)  
3901 South Ocean Drive  
Suite 9E  
Hollywood, Florida  
33019-3003  
United States

Tel: +1 (954) 278 8470  
Tel: +1 (619) 670 7777  
Fax: +1 (954) 278 8471

[sales@bicomsystems.com](mailto:sales@bicomsystems.com)

Bicom Systems (CAN)  
126C Hampton Rd  
Suite# 316  
Rothesay, New Brunswick  
E2E 2N6  
Canada

Tel: +1 (647) 313 1515  
Tel: +1 (506) 635 1135

[sales@bicomsystems.com](mailto:sales@bicomsystems.com)

Bicom Systems (UK)  
Unit 5 Rockware BC  
5 Rockware Avenue  
Greenford, London  
UB6 0AA  
United Kingdom

Tel: +44 (0) 20 33 99 88 00  
Fax: +44 (0) 20 33 99 88 01

[sales@bicomsystems.com](mailto:sales@bicomsystems.com)

Bicom Systems (France)  
188 Route de Blessy  
St. Quentin  
Aire-sur-la-Lys  
62120  
France

Tel: +33 (0) 3 60 85 08 56

[sales@bicomsystems.com](mailto:sales@bicomsystems.com)

## About Bicom Systems

### Vision Statement

We Unify Communications!

### Mission Statement

We provide the Communication World with the most Complete Turnkey Communication Systems available by Creating, Unifying and Supporting the Most Advanced of Current Technologies.

### Overview

Bicom Systems was the first company to deliver Open Source Communications Software as Professional Turnkey Solutions.

By combining the best of open source telephony and its own proprietary software, Bicom Systems can provide enterprises with turnkey solutions that take account of the clients' exact needs within a very cost-effective framework - giving CIOs the safest choice. This mix includes royalty-free software, vibrant open source communities, available custom development backed up by accountable, professional support services.

The company finds innovative open source communication projects and professionalizes the project by creating, unifying and supporting turnkey systems with its proprietary in-house software. Bicom Systems provides the resources, core development and support services to enable popular open source projects to scale into enterprise-class communications software.