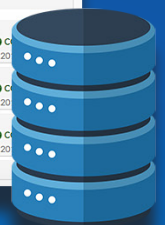
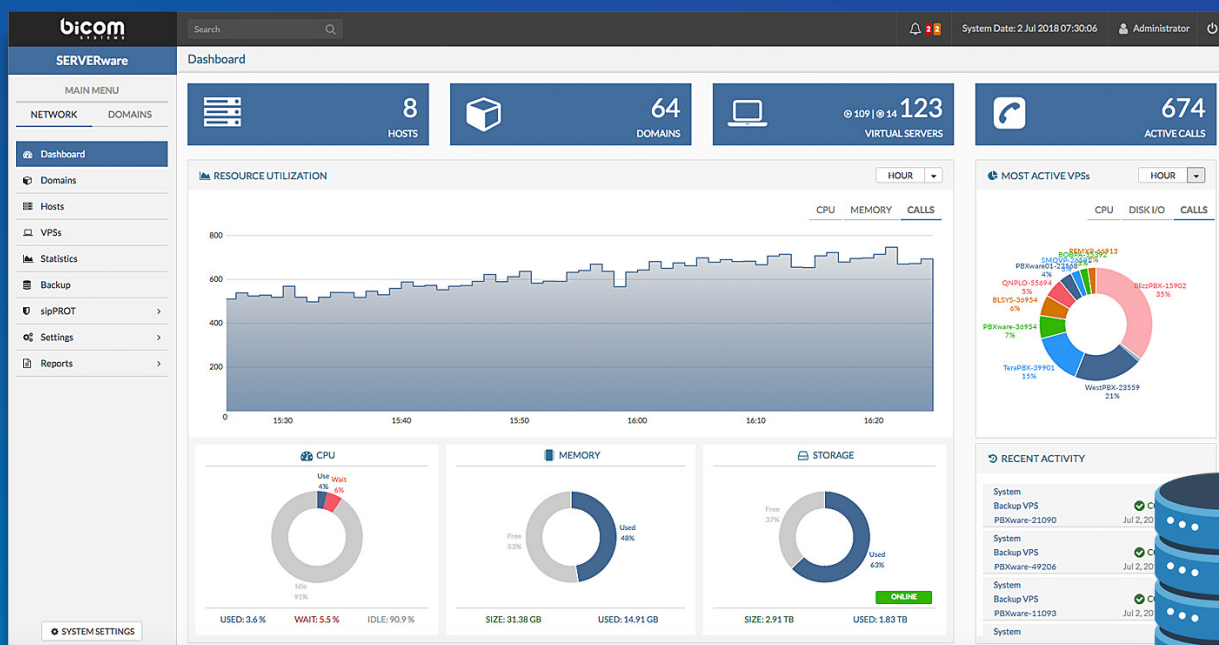


# VIRTUALIZATION PLATFORM

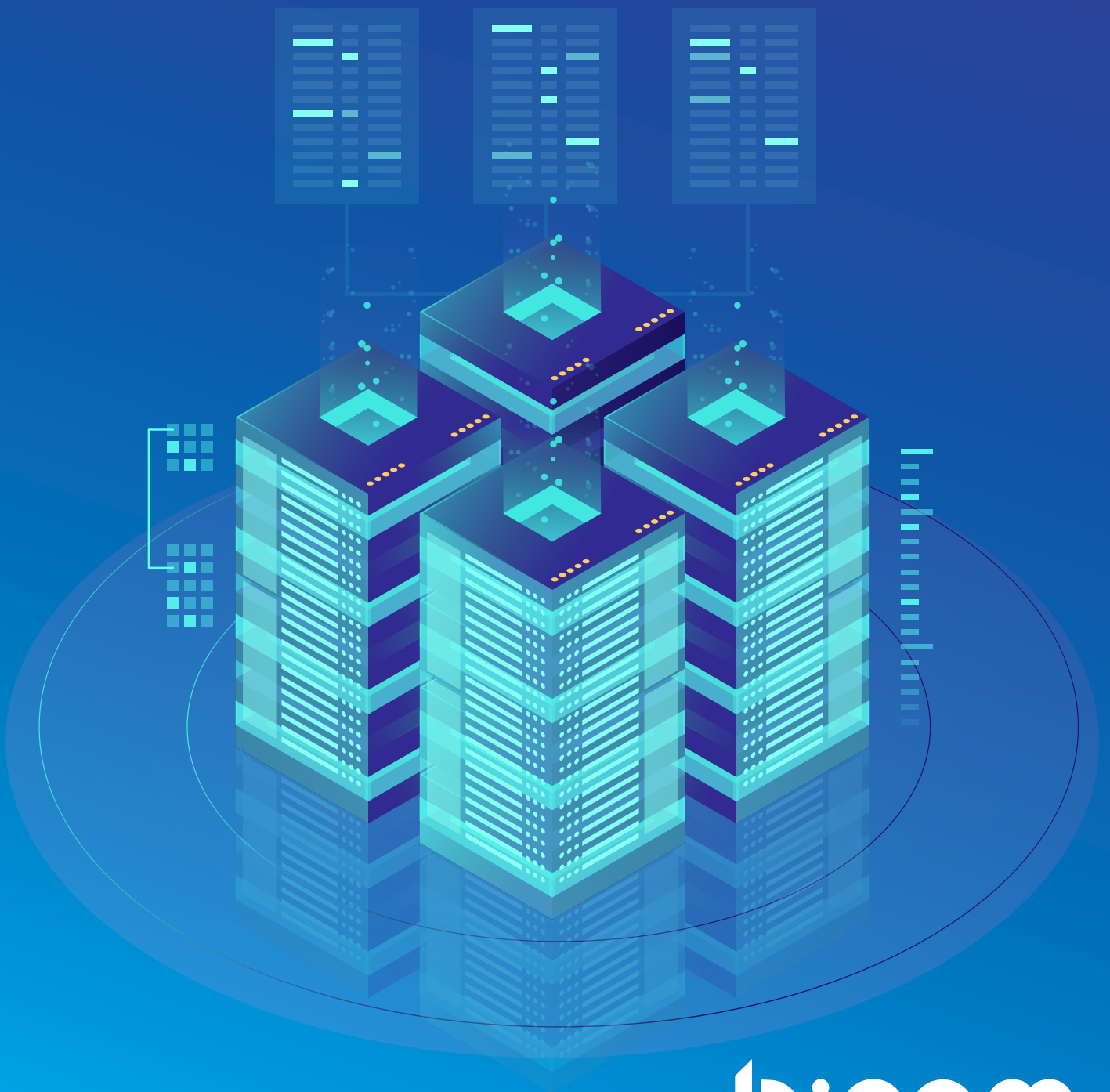
for hosting telephony in the cloud



## SERVERware 3.2

# BACKUP YOUR DATA

SERVERware's built-in backup functionality provides an easy way to additionally protect hosted services.



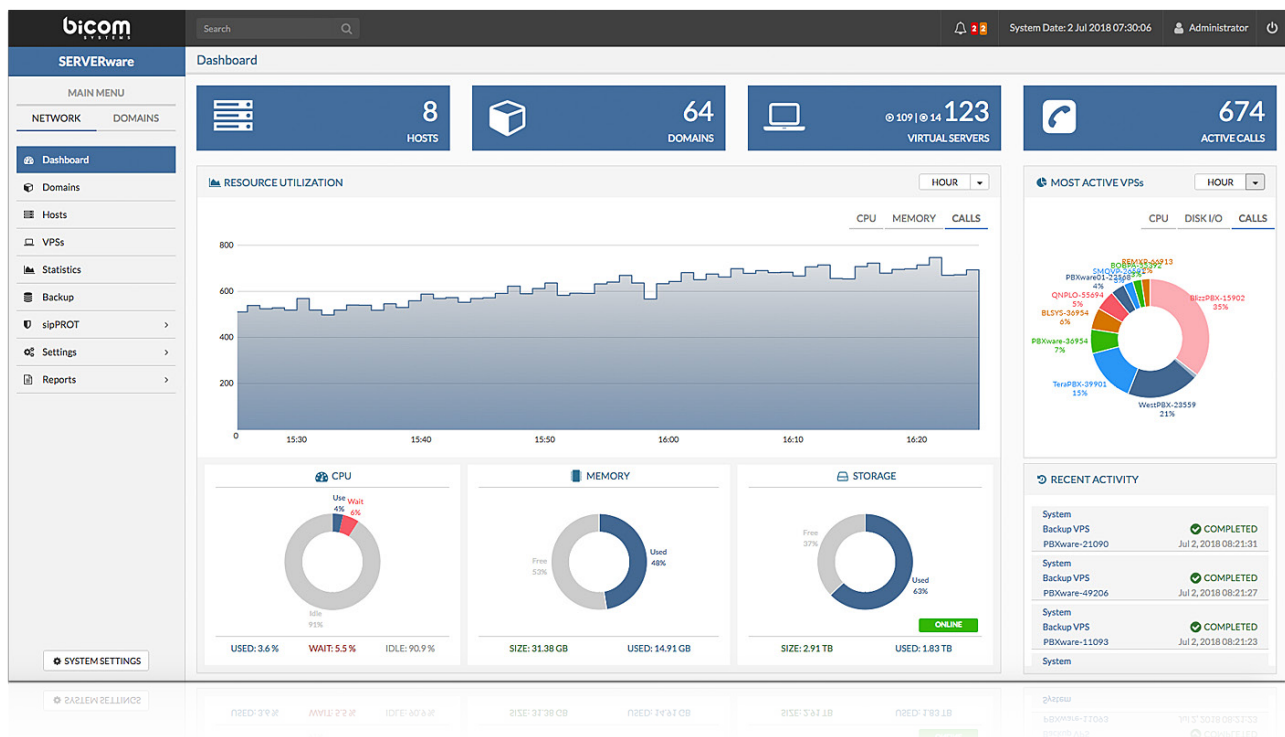
**bicom**  
S Y S T E M S

# SERVERware

The only Virtualization Platform dedicated to Hosting Telephony & Unified Communications in the Cloud. It delivers a wide range of IP services and applications with high availability, stability & reliability for a maximum up-time.

Serve many different types of clients with different PBXware editions at the same time as well as TELCOware, sipPROT and sipMON all through one SERVERware interface. The new GUI has made Management of Hosts, VPSs & Resources easier than ever.

SERVERware 3 has been completely revamped with the new underlying virtualization technology, 64bit and 32bit backward compatibility with the older versions of PBXware, shared, fault-tolerant and redundant network storage, high data integrity protection and built-in backup system.



# System Dashboard

Monitor your system resources and status of all Hosts and VPSs by using the SERVERware Dashboard. All relevant system information (CPU, Memory & Storage) is contained within a single screen and delivered comprehensively in real time. Recently triggered alarms are displayed on the dashboard allowing everything to be in one centralized screen.

## Storage Stability

SERVERware storage is using OpenZFS, a proven next-generation file system technology. OpenZFS is perfectly suited for SERVERware needs. It allows you to expand storage by adding more drives into the storage pool, create maintenance schedules, monitor storage health etc.

## Domain Management

SERVERware allows administrators to create Domains and assign them to a company department or third party. Domains are basically containers with assigned resource pools, allowing a Domain Administrator to deploy and manage VPS. This allows System Administrators to allocate each domain their resources (RAM & Storage).

## Statistics

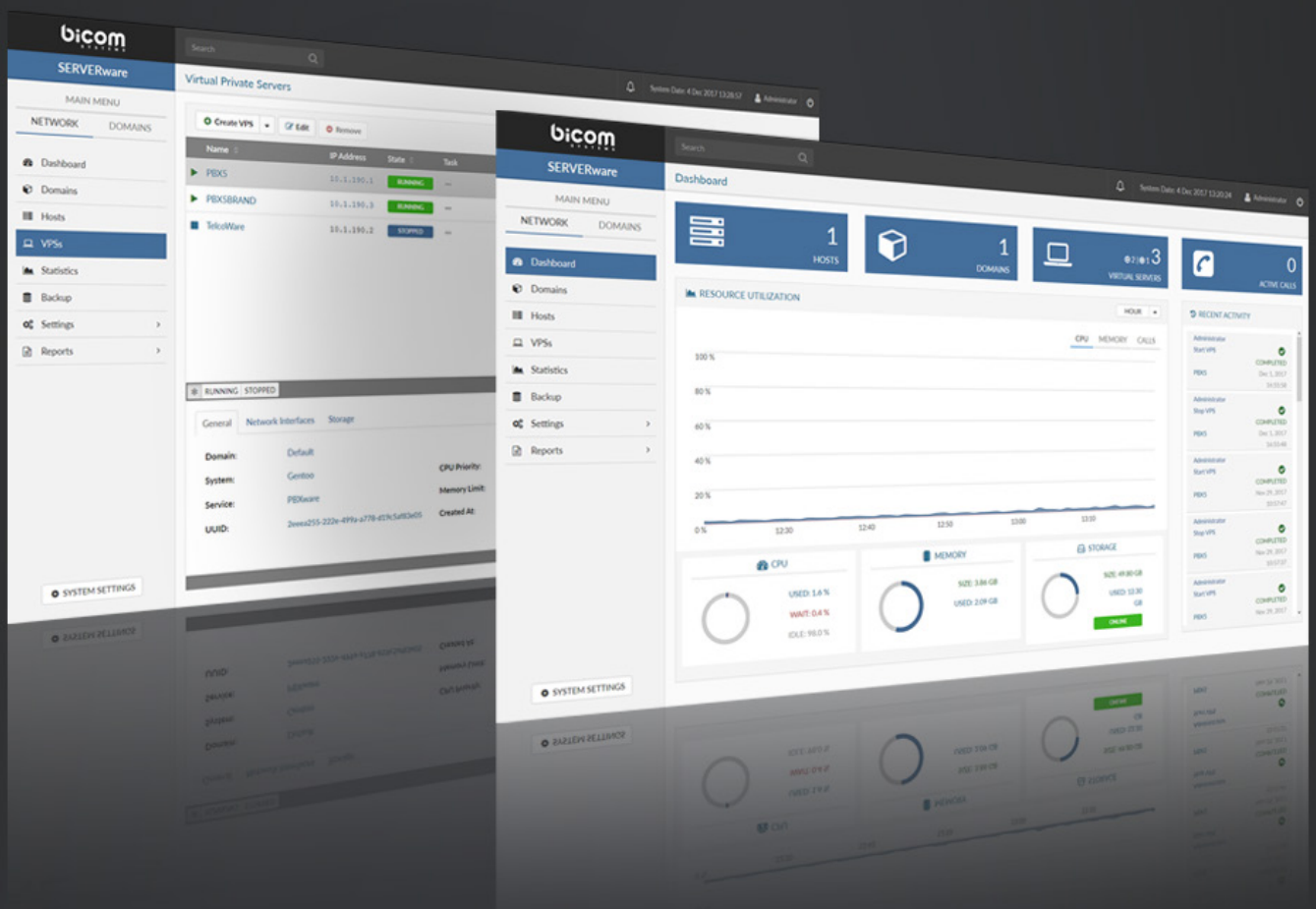
The SERVERware statistics module collects data in regards to the resource usage per Host and VPS. Data on a wide range of metrics are collected frequently. The metric data is processed and archived in the database to be displayed on the Serverware GUI. The performance charts graphically display CPU, memory, network, concurrent calls metrics, Hosts and VPSs that are managed by SERVERware.

# User Management

SERVERware offers two levels of access: System Administrators & Domain Member. System Administrators have Full Privileges while Domain Members have Privileges limited to their Domain. Within the Domain members group, you will find Domain Administrators, VPS administrator and VPS Owner each with different permission level based on their needs.

## Alarms

Knowing when something is about to go wrong is the best tool for network admins. SERVERware monitors the status of main system components (both virtual and physical) resources. If system resources reach the threshold or should Hosts/VPS go down SERVERware will failover and send a notification to the administrator in real time, indicating the issue.



# VPS Management

Easily deploy VPSs with the allocated resource pool (Processing, Memory, Storage, and Broadband). SERVERware will automatically create a Highly Available setup for you (a duplicate instance of VPS) by simply selecting the option during the configuration. The entire process is completed via only a few simple clicks. The VPS Commands that are available at the click of a mouse are: Start, Stop, Freeze, Copy, Move and Restore. These functions allow Admins to manage more from the GUI and less from the CLI.

## Domains

With SERVERware you can manage users, domains, IP pools, service pools, sipPROT... all from one interface. By using Domains you can represent a company, department or an individual each having its own resources and its own Domain Administrator. SERVERware 3 allows you to allocate and extend IP pool in a LAN subnet and then split them per Domain. You can also define service pools and then assign processing hosts to these pools.

## Monitoring

You can now monitor network resources, hosts, and servers with ease. SERVERware system monitoring module actively searches for errors and reports them back to the administrator via notifications and alarms, while SERVERware statistics module collects data about system usage and displays them inside a graphic user interface. The new and improved GUI allows a user to quickly clone, create and move VPSs, and it simplifies the installation and setup process.

## Backup

SERVERware's built-in backup functionality provides an easy way to additionally protect hosted services, allowing you to schedule a full/an incremental backup at a desired time with the possibility to select the target destination. Backups can be configured for ALL VPSs or per domain.





# DID YOU KNOW?

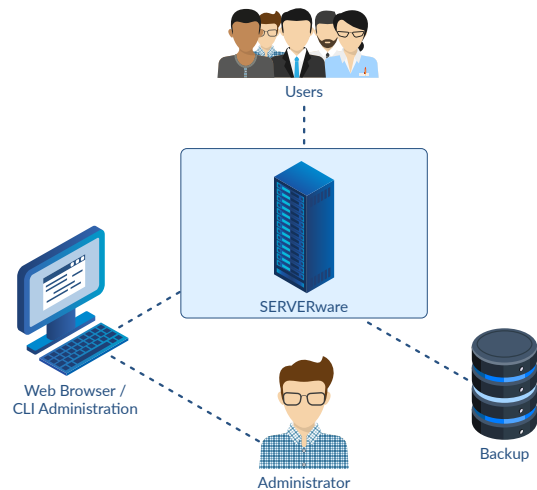
With SERVERware you can deploy a new PBXware instance with a single click. Serve many different types of clients with different PBX editions at same time all through one interface without the need for extra hardware.

# FIND YOUR PERFECT EDITION

There is no “One-Size-Fits-All” solution when it comes to hosting business communications. This is why SERVERware comes in three different editions:

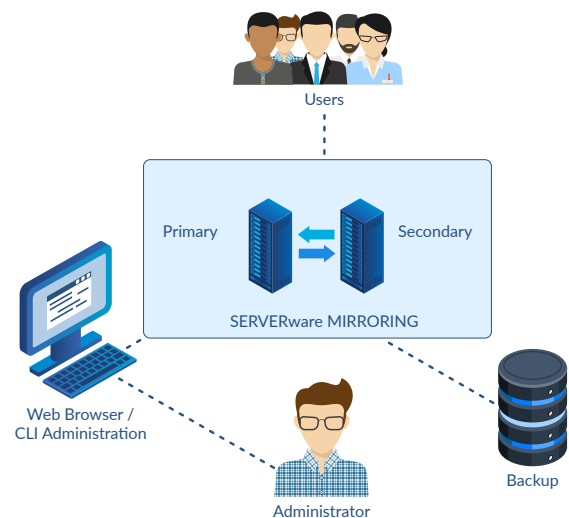
## Standalone

Standalone edition allows users to install SERVERware on a single server. This edition is suitable for startup Telco companies and businesses who want to host their own telephony solution in-house.



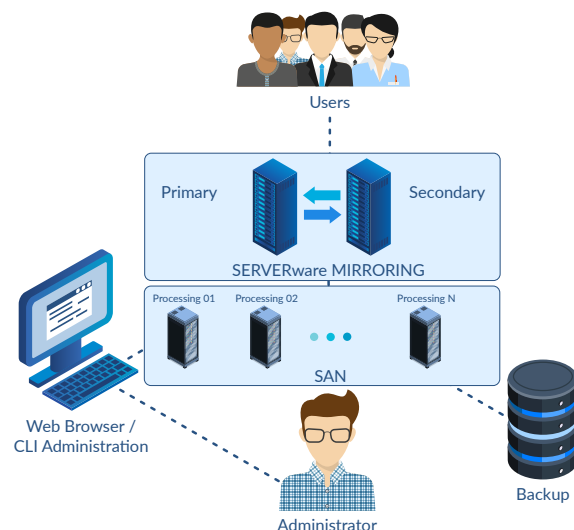
## Mirror

Mirror edition introduces an additional layer to data protection. In order to provide high availability of hosted services, it requires two identical servers (primary/secondary) connected back-to-back. Data between these servers is synced in real time (from primary to secondary).



## Cluster

Cluster edition brings more scalability options to your Cloud Hosting platform by allowing the additional Processing Host units. Each additional host brings more processing power and memory to the Cloud Hosting platform in accordance with its hardware specifications.







# HOSTED or ON-PREMISE

At Bicom Systems, we offer both hosted and on-premise solutions for Unified Communications. When you choose the hosted deployment option, you are relieved of the burden of purchasing and maintaining the hardware. Companies that opt for the on-premise solution have the complete control over all their servers and data.

# CONTACT BICOM SYSTEMS TODAY

to find out more about our services

## **Bicom Systems (USA)**

2719 Hollywood Blvd  
B-128  
Hollywood, Florida  
33020-4821  
United States

Tel: +1 (954) 278 8470

Tel: +1 (619) 760 7777

Fax: +1 (954) 278 8471

## **Bicom Systems (CAN)**

Hilyard Place  
B-125  
Saint John, New Brunswick  
E2K 1J5  
Canada

Tel: +1 (647) 313 1515

Tel: +1 (506) 635 1135

## **Bicom Systems (UK)**

Unit 5 Rockware BC  
5 Rockware Avenue  
Greenford  
UB6 0AA  
United Kingdom

Tel: +44 (0) 20 33 99 88 00

Fax: +44 (0) 20 33 99 88 01

## **Bicom Systems (FRA)**

188 Route de Blessy  
St. Quentin  
Aire-sur-la-Lys  
62120  
France

Tel: +33 (0) 3 60 85 08 56

email: [sales@bicomsystems.com](mailto:sales@bicomsystems.com)

## Follow us



Copyright Bicom Systems 2020